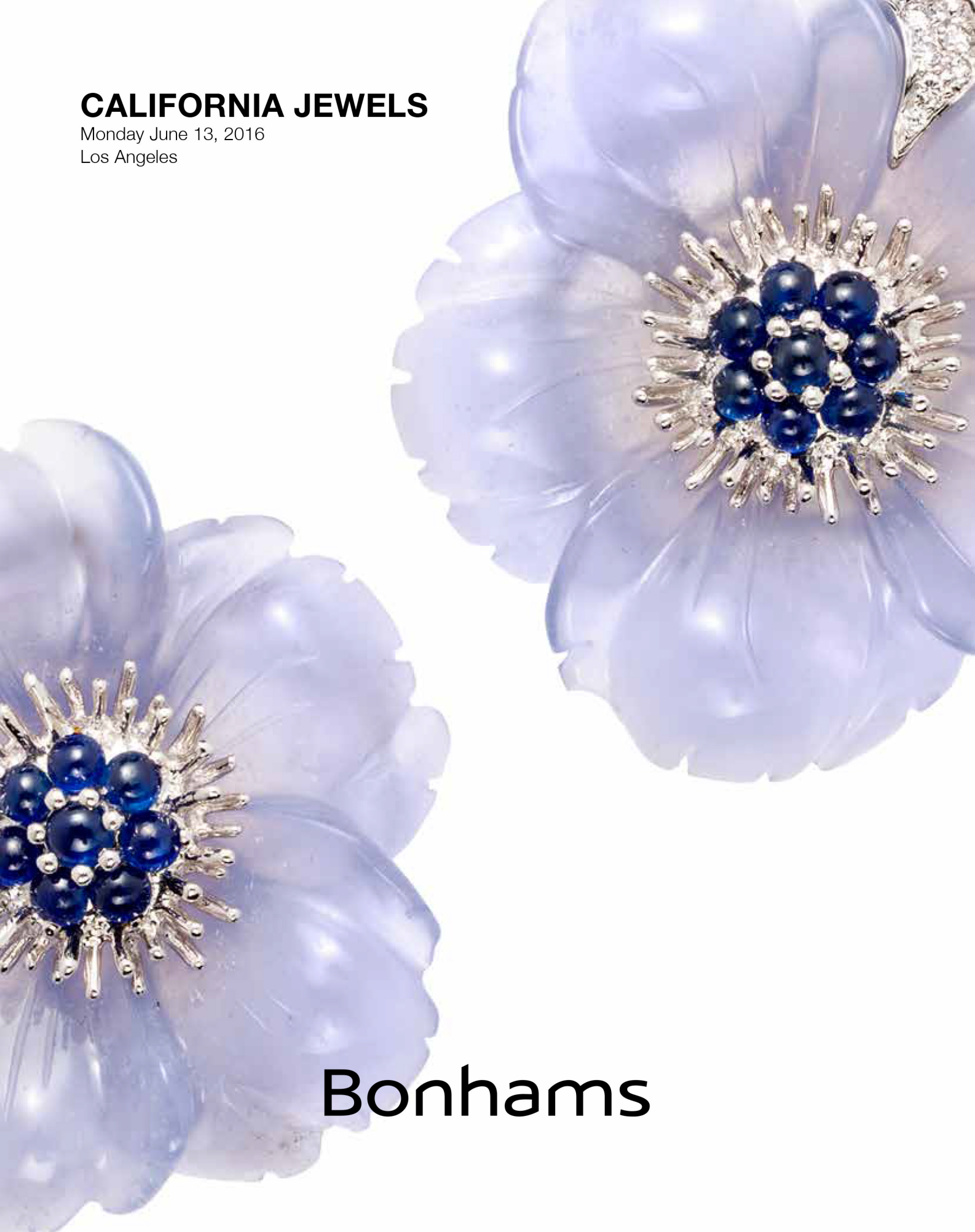


CALIFORNIA JEWELS

Monday June 13, 2016
Los Angeles



Bonhams



CALIFORNIA JEWELS

Monday June 13, 2016 at 10am

Los Angeles

BONHAMS

7601 West Sunset Blvd,
Los Angeles, CA 90046

bonhams.com

PREVIEW

New York

Saturday May 14, 12pm to 5pm

Sunday May 15, 12pm to 5pm

Monday May 16, 10am to 5pm

Los Angeles

Friday June 10, 12pm to 5pm

Saturday June 11, 12pm to 5pm

Sunday June 12, 12pm to 5pm

SALE NUMBER: 23411

Lots 1 - 420

CATALOG: \$35

BIDS

+1 (323) 850 7500

+1 (323) 850 6090 fax

To bid via the internet please visit
www.bonhams.com/23411

Please note that telephone bids must be submitted no later than 4pm on the day prior to the auction. New bidders must also provide proof of identity and address when submitting bids. Please contact client services with any bidding inquiries.

Please see pages 83 to 85 for bidder information including Conditions of Sale, after-sale collection and shipment.

INQUIRIES

Matthew Girling
Group Jewelry Director

+44 207 468 8278

matthew.girling@bonhams.com

Susan Abeles

Director, US Jewelry

+1 (212) 461 6525

susan.abeles@bonhams.com

Los Angeles:

Dana Ehrman, G.G.

Director, LA Jewelry

Claire De Biasio-Paris, G.G.

Kelly Sitek, G.G.

+1 (323) 436 5424

San Francisco:

Shannon Beck

+1 (415) 503 3306

Automated Results Service

+1 (800) 223 2854

ILLUSTRATIONS

Front cover: Lot 361

Inside front cover: Lot 154

Inside back cover: Lots 23, 36

Back cover: Lot 225



Lot 136

Bonhams

220 San Bruno Avenue
San Francisco, California 94103
© 2016, Bonhams & Butterfields
Auctioneers Corp.; All rights reserved.
Bond No. 57BSBGL0808



PROPERTY OF A BEVERLY HILLS LADY

1 AN EMERALD, DIAMOND AND 14K GOLD WOVEN BRACELET
estimated total diamond weight: 1.50cts; gross weight approximately: 45 grams; length: 7in.

US\$1,500 - 2,000

2 AN 18K GOLD FRINGE NECKLACE, ITALIAN
approximately 84 grams; length: 15in.

US\$2,500 - 3,500

3 A PAIR OF DIAMOND, RUBY, SAPPHIRE, EMERALD AND 18K GOLD EAR CLIPS, FRENCH
with French marks; length: 7/8in.

US\$1,200 - 1,800

4 A PAIR OF CULTURED PEARL, DIAMOND AND GOLD EAR CLIPS
pearls approximately 12.0mm; estimated total diamond weight: 1.50cts; length: 1in.

US\$1,200 - 1,800

5 A 19TH CENTURY GEM-SET, DIAMOND AND GOLD CRESCENT BROOCH
estimated total diamond weight: 2.00cts; length: 1 1/2in.

US\$1,200 - 1,800

6 A RUBY, DIAMOND AND 18K GOLD WOVEN BRACELET, FRENCH
with French maker's mark; estimated total diamond weight: 1.10cts; gross weight approximately: 70 grams; length: 7in.

US\$2,500 - 3,500



7
A CULTURED PEARL, DIAMOND AND GOLD BANGLE BRACELET

pearls approximately 7.5mm; diameter: 2 1/4in.

US\$1,000 - 1,500

8
A ROCK CRYSTAL, PINK TOURMALINE, CITRINE, AGATE AND 18K GOLD BEAD NECKLACE, BVLGARI

signed Bvlgari, with signed folder; length: 22in.

US\$2,000 - 3,000

9
A CITRINE, AMETHYST, DIAMOND AND 18K GOLD NECKLACE AND RING SET

necklace length: 15 1/2in.; ring size: 6

US\$2,000 - 3,000

10
TWO 18K GOLD RINGS, KIESELSTEIN-CORD

one with hardstone intaglio; signed B. Kieselstein Cord; gross weight approximately: 37 grams; size: 7 and 5 1/2

US\$1,200 - 1,800

11
A DIAMOND AND 18K GOLD RING, ELIZABETH GAGE, 1991

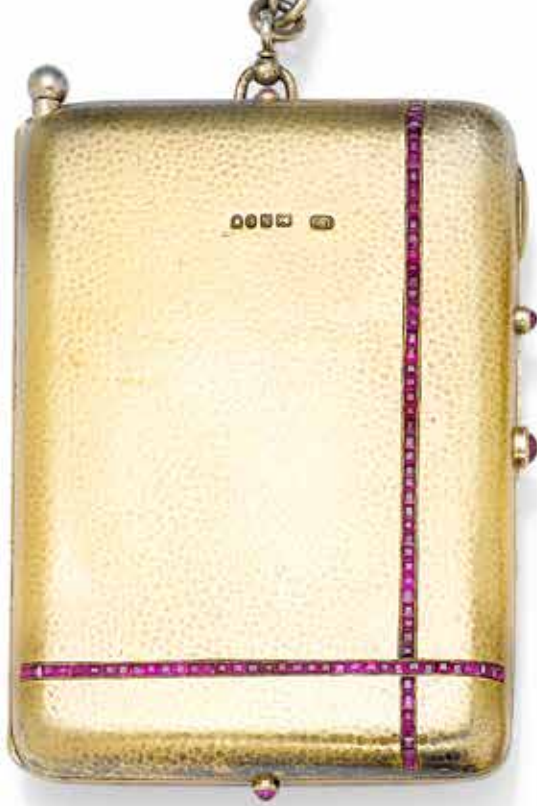
signed Gage, with English hallmarks, London, 1991; with signed pouch; size: 6

US\$1,200 - 1,800

12
A CARNELIAN INTAGLIO, SAPPHIRE AND 18K BI-COLOR GOLD CUFF BRACELET, BVLGARI

signed Bvlgari, no. BD 2626; gross weight approximately: 57 grams; diameter: 2 1/8in.

US\$2,500 - 3,500



13



14



15

16

17

PROPERTY OF VARIOUS OWNERS

13
A GILT SILVER AND RUBY VANITY CASE, LONDON, 1903

opening to reveal a mirror; no. 21475, with English import marks, London, 1903; dimensions: 3 1/2 x 2 1/2 x 5/8in.

US\$1,000 - 1,500

14
AN ENAMEL, DIAMOND AND 18K GOLD FLOWER BROOCH

length: 2 1/2in.

US\$1,000 - 1,500

15
A HARDSTONE AND GOLD BRACELET

including agate, bloodstone and jasper; length: 8 1/4in.

US\$1,200 - 1,800

PROPERTY OF A BEVERLY HILLS LADY

16
A GOLD, CULTURED PEARL AND ENAMEL LARIAT NECKLACE, TOGETHER WITH A BUCKLE BRACELET

gross weight approximately: 87 grams; length adjustable

US\$1,800 - 2,500

PROPERTY OF VARIOUS OWNERS

17 Y
A CORAL AND GOLD RING AND PAIR OF EARRINGS

with fitted box; ring size: 5 1/2; earring length: 1 3/8in.

US\$1,200 - 1,500



18

19

20

18^Y
A COLLECTION OF FIVE GEM-SET AND GOLD CHARMS

including coral, turquoise and amethyst;
 length: 2 to 1 1/2in.

US\$1,500 - 2,500

19
A 14K GOLD WOVEN PURSE

approximately 74 grams; dimensions: 3 x 2 3/4in.

US\$1,000 - 2,000

20
AN ENAMEL, TURQUOISE AND GOLD ROSE MOTIF JEWELRY SUITE

comprising a bracelet, brooch and ring;
 gross weight approximately: 59.7 grams;
 bracelet length: 7in.; brooch length: 1 5/16in.; ring size: 6

US\$2,000 - 3,000



21



22



24



25



23



26

**21
A PAIR OF CARVED JADEITE JADE
BANGLE BRACELETS**

diameter: 2 5/8in.

US\$1,000 - 1,500

**22
A DIAMOND AND PLATINUM BAR PIN**

*estimated total diamond weight: 4.30cts;
length: 2 1/8in.*

US\$1,500 - 2,000

**23
AN ART DECO ENAMEL, LAPIS LAZULI,
DIAMOND AND GILT SILVER VANITY
CASE, FRENCH**

*opening to reveal a mirror, lipstick holder
and two powder compartments; no. 2917,
with French assay marks and maker's mark;
gross weight approximately: 163 grams;
dimensions: 3 1/4 x 1 7/8 x 3/4in.*

US\$1,500 - 2,500

**24
A BOULDER OPAL, DIAMOND,
PLATINUM AND 18K GOLD RING**

*oval boulder opal cabochon: 4.36cts; size:
6 1/4*

US\$3,000 - 5,000

**25
A JADEITE JADE, DIAMOND, ONYX AND
PLATINUM RING**

*marquis-shaped jadeite jade cabochon
approximately 16.50 x 6.70 x 2.71mm; size:
7 1/2*

US\$4,000 - 6,000

Mason-Kay report #160404-5, dated April
4, 2016, stating: Natural Jadeite Jade - 'A'
Jade.

**26
A DIAMOND AND PLATINUM DOUBLE
CLIP BROOCH**

*estimated total diamond weight: 8.00cts;
dimensions: 2 3/4 x 1in.*

US\$3,000 - 5,000

27



28



29



30



32



31



27^Y

A CORAL AND 14K GOLD TORSADE NECKLACE

comprising six strands of coral beads, measuring approximately 4.4 to 3.7mm; length: 18in.

US\$1,000 - 1,500

28

A DIAMOND AND PLATINUM RING AND ETERNITY BAND

transitional round brilliant-cut center diamond approximately 1.15cts; estimated remaining diamond weight: 1.30cts; sizes: 6 3/4 and 5

US\$3,000 - 5,000

29

AN ENAMEL, JADE, DIAMOND, PLATINUM AND 14K GOLD COMPACT, TIFFANY & CO.

opening to reveal a mirror; signed *Tiffany & Co.*; gross weight approximately: 89 grams; dimensions: 1 7/8 x 1 3/4 x 1/2in.

US\$2,000 - 3,000

30

AN ART DECO DIAMOND AND WHITE GOLD THREE-STONE RING

estimated total diamond weight: 1.20cts; size: 8 3/4

US\$800 - 1,000

31

A DIAMOND, SYNTHETIC RUBY, GREEN CHALCEDONY AND PLATINUM BROOCH

estimated total diamond weight: 3.70cts; length: 2in.

US\$1,500 - 2,500

32

A PAIR OF CARVED JADEITE JADE, DIAMOND AND 14K WHITE GOLD EAR PENDANTS

length: 1 1/8in.

US\$1,000 - 2,000



33



36



34



35



37



38

33
A 19TH CENTURY SAPPHIRE, DIAMOND AND SILVER-TOPPED GOLD BANGLE BRACELET, FRENCH

oval-shaped sapphire approximately 9.0 x 6.5 x 4.3mm; with French assay marks; estimated total diamond weight: 1.50cts; diameter: 2 1/4in.

US\$2,500 - 3,500

34
A TURN OF THE CENTURY OPAL, DIAMOND AND PLATINUM-TOPPED GOLD RING

size: 5

US\$1,000 - 2,000

35
AN ANTIQUE LAPIS LAZULI, PEARL, DIAMOND AND SILVER-TOPPED GOLD CROSS PENDANT WITH AN ENAMEL AND GOLD CHAIN

pendant length: 2 3/4in.; chain length: 21in.

US\$4,000 - 6,000

36
A GOLD, SILVER AND RUBY COMPACT, BOUCHERON

opening to reveal a mirror; signed Boucheron - Paris, no. 875012, with French assay marks; gross weight approximately: 280 grams; dimensions: 3 1/2 x 3 x 5/8in.

US\$2,500 - 3,500

37
A PAIR OF DIAMOND, BLACKENED SILVER AND GOLD EARRINGS
set with rose-cut diamonds; length: 1 1/2in.

US\$2,500 - 3,500

38
AN ENAMEL, SAPPHIRE AND GOLD RING
oval-shaped sapphire approximately 5.85 x 4.95 x 2.20mm; size: 5

US\$1,000 - 1,500



39
**A TURQUOISE AND MULTI-COLORED
 GOLD BRACELET**

*gross weight approximately: 45 grams;
 length: 7 1/4in.*

US\$1,500 - 2,000

40
**AN 18K GOLD, TURQUOISE AND RED
 STONE BRACELET**

*gross weight approximately: 37 grams;
 length: 7in.*

US\$1,500 - 2,000

41
**A DIAMOND, DEMANTOID GARNET AND
 GOLD RING**

set with three rose-cut diamonds; size: 6

US\$3,500 - 4,500

42
**A SEMI-BLACK OPAL, PLATINUM AND
 WHITE GOLD STICK PIN**

*oval-shaped opal approximately 19.0 x
 12.5mm; length: 2 3/4in.*

US\$1,000 - 1,500

43
**AN EDWARDIAN SEED PEARL,
 DIAMOND AND PLATINUM CROSS
 PENDANT WITH CHAIN**

*estimated total diamond weight: 1.15cts;
 length: 18in. (seed pearls untested for origin)*

US\$2,800 - 3,500

44
**A CARVED EMERALD, DIAMOND AND
 GOLD FLOWER BROOCH**

*estimated total diamond weight: 2.35cts;
 length: 2 1/8in.*

US\$1,000 - 1,500



45

**45
AN EMERALD, DIAMOND AND 18K
GOLD RING**

pear-shaped emerald cabochon
approximately 20.5 x 19.3mm; *estimated*
total diamond weight: 1.75cts; size: 4 1/2

US\$3,500 - 5,500

**46
TWO EMERALD BEAD, CULTURED
PEARL AND GOLD NECKLACES**

emerald beads approximately 17.5 to
3.7mm; pearls approximately 7.5 to 6.1mm;
length: 22 and 17in.

US\$2,000 - 3,000

47

**47
AN AQUAMARINE AND GOLD RING,
HELEN WOODHULL**

oval aquamarine cabochon approximately
15.45 x 11.55mm; *signed H.W.*; size: 6

US\$800 - 1,200

**48
A DIAMOND AND 18K GOLD BANGLE
BRACELET, TOGETHER WITH A PAIR
OF GLASS INTAGLIO AND 18K GOLD
EARRINGS, ELIZABETH LOCKE**

with maker's mark; gross weight
approximately: 44 grams; bracelet diameter:
2 1/4in.; earring length: 3/4in.

US\$1,500 - 2,500

48

46

**PROPERTY FROM THE ESTATE OF
FAITH DOMERGUE**

**49
A PAIR OF 18K GOLD HOOP EARRINGS,
ATTRIBUTED TO BULGARI**

*unsigned, with workshop mark for Giolla,
Milan; length: 1in.*

US\$1,000 - 2,000



50

PROPERTY OF VARIOUS OWNERS

50
**A RUBY AND 18K GOLD BAND,
ELIZABETH GAGE, 1993**
*signed Gage, with English hallmarks, London,
1993; with signed pouch; size: 6*

US\$1,200 - 1,800

51
**A GLASS INTAGLIO, RUBY, CULTURED
PEARL, DIAMOND AND 14K GOLD
NECKLACE, TAGLIAMONTE, ITALIAN**
*signed Tagliamonte, with Italian marks; gross
weight approximately: 75 grams; length:
18in.*

US\$1,000 - 2,000



52

52
**AN ENAMEL, DIAMOND AND 18K GOLD
PAINTED PORTRAIT BROOCH/PENDANT**
*signed Plojoux, Genève, no. 38544;
diameter: 1 1/8in.*

US\$1,000 - 1,500

53
AN 18K GOLD CHARM BRACELET
*suspending a locket charm; gross weight
approximately: 70 grams; length: 7 3/4in.*

US\$1,800 - 2,500





54
A CULTURED PEARL, DIAMOND AND WHITE GOLD NECKLACE
 round brilliant-cut center diamond approximately 0.90ct; *estimated remaining diamond weight: 2.40cts; length: 18in.*
US\$2,500 - 3,500

55
A DIAMOND AND 14K WHITE GOLD RING
 old European-cut center diamond approximately 1.45cts; *estimated remaining diamond weight: 1.50cts; size: 5 1/2*
US\$3,000 - 5,000

56
A DIAMOND AND PLATINUM LAPEL WATCH
 17j, adjusted; *dial signed Tiffany & Co.; movement signed Concord Watch Co., case no. 33484; estimated total diamond weight: 1.65cts; length: 2 1/2in.*
US\$1,500 - 2,000

57
A PAIR OF 19TH CENTURY SAPPHIRE, DIAMOND AND PLATINUM-TOPPED GOLD EARRINGS, FRENCH
with French assay marks; estimated total diamond weight: 1.60cts; length: 5/8in.
US\$3,000 - 5,000

58
A TURN OF THE CENTURY DIAMOND AND PLATINUM-TOPPED GOLD RING
estimated total diamond weight: 1.30cts; size: 4 1/2
US\$1,000 - 2,000

59
AN ART DECO SYNTHETIC SAPPHIRE, DIAMOND AND PLATINUM RING
estimated total diamond weight: 1.00ct; size: 3 3/4
US\$1,500 - 2,500



60

61



62



63



64



65

**60
A SAPPHIRE, DIAMOND AND PLATINUM
BROOCH**

rectangular step-cut sapphire approximately 11.70 x 7.80 x 5.20mm; *estimated total diamond weight: 3.85cts; dimensions: 1 3/4 x 1 3/8in.*

US\$2,000 - 3,000

Please see Bonhams jewelry department for laboratory report.

**61
A SAPPHIRE AND PLATINUM LINE
BRACELET**

length: 7in.

US\$3,000 - 5,000

**62
AN ART DECO DIAMOND, SYNTHETIC
SAPPHIRE AND PLATINUM BRACELET**

estimated total diamond weight: 1.25cts; length: 7 1/4in.

US\$1,200 - 1,500

**63
AN ART DECO DIAMOND, SYNTHETIC
SAPPHIRE AND PLATINUM RING**

estimated total diamond weight: 1.50cts; size: 7

US\$1,000 - 1,500

**64
A PAIR OF SAPPHIRE, DIAMOND AND
PLATINUM CLIP BROOCHES**

estimated total diamond weight: 2.30cts; length: 1 1/8in.

US\$3,000 - 5,000

**65
AN ART DECO DIAMOND, SYNTHETIC
SAPPHIRE AND PLATINUM
WRISTWATCH**

jewel movement, adjusted; *movement and case no. 21562, with Swiss marks; estimated total diamond weight: 1.50cts; length adjustable*

US\$1,200 - 1,600



66

71

70

67

68

69

66

AN EDWARDIAN CULTURED PEARL AND PLATINUM LONG CHAIN NECKLACE

pearls approximately 3.4 to 3.2mm; length: 57in.

US\$2,500 - 3,500

67

AN EDWARDIAN DIAMOND AND PLATINUM BOW BROOCH

estimated total diamond weight: 2.45cts; dimensions: 1 3/4 x 1in.

US\$1,200 - 1,800

68

A CULTURED PEARL, DIAMOND, PLATINUM AND PATINATED STEEL RING, MARSH & CO.

pearl approximately 12.0mm; *unsigned, attributed to Marsh & Co.*; size: 8 1/2

US\$1,000 - 1,500

69

A TURN OF THE CENTURY DEMANTOID GARNET, CULTURED BAROQUE PEARL, DIAMOND AND PLATINUM-TOPPED GOLD BROOCH

dimensions: 1 x 1 1/2in.

US\$2,000 - 3,000

70

A DIAMOND AND GOLD TWO-STONE RING

set with two old European-cut diamonds, each weighing approximately 1.00ct ; size: 6 1/2

US\$4,000 - 6,000

71

AN ART DECO DIAMOND AND PLATINUM WRISTWATCH

6j, adjusted; dial and case signed Seale, case no. 3519, movement signed Paul Ditisheim; estimated total diamond weight: 1.45cts; gross weight approximately: 37 grams; length: 7in.

US\$1,200 - 1,800



72

72
AN ART DECO DIAMOND, ONYX, PLATINUM AND GOLD DRESS SET
 comprising a pair of cufflinks, four shirt studs and three vest studs; *estimated total diamond weight: 1.00ct*

US\$1,000 - 1,500



73

73
A DIAMOND AND PLATINUM BRACELET
estimated total diamond weight: 5.40cts; length: 7in.

US\$3,000 - 5,000



74

74
A JADEITE JADE, DIAMOND AND 14K WHITE GOLD RING
 marquise-shaped jadeite cabochon approximately 11.60 x 6.96 x 4.40mm; *estimated total diamond weight: 1.00ct; size: 6 1/2*

US\$2,500 - 3,500



75

75
AN ART DECO DIAMOND AND PLATINUM CIRCLE BROOCH
estimated total diamond weight: 2.20cts; diameter: 1 3/8in.

US\$1,000 - 1,500



76

76
A PAIR OF CARVED JADEITE JADE, DIAMOND, RUBY, ONYX AND WHITE GOLD PENDANT EARRINGS
length: 2 1/2in.

US\$1,000 - 2,000



77

77
AN ART DECO EMERALD, DIAMOND, CULTURED PEARL AND PLATINUM CHARM BRACELET
 suspending three charms; *length: 7in.*

US\$3,000 - 5,000

78



82

79



81

83



80

78

AN ART DECO ONYX, DIAMOND, PLATINUM AND GROSGRAIN RIBBON COLLAR

length: 12in.

US\$2,000 - 3,000

79

A DIAMOND, RUBY AND PLATINUM RING

estimated total diamond weight: 1.40cts; size: 7

US\$3,500 - 5,000

80

AN ART DECO DIAMOND, SYNTHETIC SAPPHIRE AND PLATINUM BRACELET

estimated total diamond weight: 2.70cts; length: 7 1/2in.

US\$1,500 - 2,500

81

A DIAMOND AND PLATINUM WRISTWATCH, HAMILTON

17j; dial and movement signed Hamilton; movement no. T599443; length: 6 1/2in.

US\$1,000 - 2,000

82

A SAPPHIRE, DIAMOND AND WHITE GOLD BROOCH

oval-shaped sapphire approximately 9.9 x 7.5 x 4.7mm; estimated total diamond weight: 2.00cts; length: 1 1/2in.

US\$1,000 - 1,200

83

A SAPPHIRE, DIAMOND AND PLATINUM BAR BROOCH

estimated total diamond weight: 3.00cts; length: 2 3/8in.

US\$1,000 - 1,500



84
AN ART DECO DIAMOND AND PLATINUM RING
 old European-cut center diamond approximately 1.25cts; *estimated remaining diamond weight: 1.00ct; size: 7*
 US\$3,500 - 5,500

85
A PAIR OF SAPPHIRE, PLATINUM AND WHITE GOLD EARRINGS
signed Cartier; length: 3/8in.
 US\$1,000 - 1,500

86
A DIAMOND AND PLATINUM LONG CHAIN NECKLACE
estimated total diamond weight: 2.75cts; length: 37in.
 US\$2,000 - 3,000

PROPERTY FROM THE ESTATE OF ALICE ANNE WECKBAUGH
 87
A SAPPHIRE, DIAMOND AND PLATINUM BRACELET, MCTEIGUE
with maker's mark; estimated total diamond weight: 1.65cts; length: 7in.
 US\$2,000 - 3,000

PROPERTY OF VARIOUS OWNERS
 88
AN ART DECO FANCY COLORED DIAMOND, DIAMOND, SAPPHIRE AND PLATINUM BROOCH
estimated total diamond weight: 1.50cts; length: 1 3/4in.
 US\$1,800 - 2,500

GIA report #21275487952, dated February 17, 2016, stating the old European-cut center diamond as: 0.52 carat, Fancy Yellow color, VS2 clarity.

89
A PAIR OF SAPPHIRE, DIAMOND AND 18K WHITE GOLD EARRINGS
 rectangular step-cut sapphires approximately 7.7 x 4.8mm; *estimated total diamond weight: 2.50cts; length: 1in.*
 US\$2,500 - 3,500

90
A DIAMOND AND 18K WHITE GOLD RING
 set with round brilliant and rose-cut diamonds; *size: 7*
 US\$800 - 1,200



91



92



94



93



95



96

**91
A DIAMOND, PLATINUM AND 14K GOLD
BANGLE BRACELET**

square step-cut center diamond
approximately 2.00cts; *estimated remaining
diamond weight: 4.15cts; gross weight
approximately: 54 grams; diameter: 2in.*

US\$7,000 - 10,000

**92
A DIAMOND AND BI-COLOR GOLD
PENDANT**

*estimated total diamond weight: 2.75cts;
length: 1 1/2in.*

US\$1,200 - 1,800

**93
A DIAMOND AND 14K WHITE GOLD
LADY'S WRISTWATCH, HAMILTON**

19j, adjusted; *dial and movement signed
Hamilton, case no. 281490; gross weight
approximately: 32 grams; length: 7in.*

US\$800 - 1,200

PROPERTY OF A LADY

**94
A FANCY COLORED DIAMOND,
DIAMOND AND PLATINUM RING**

fancy brownish yellow round brilliant-cut
diamond: 1.01cts; *estimated remaining
diamond weight: 2.10cts; size: 6*

US\$3,000 - 5,000

GIA report #15270881, dated October
6, 2006, stating the diamond as: Fancy
Brownish Yellow color, I1 clarity.

PROPERTY OF VARIOUS OWNERS

**95
AN EMERALD, DIAMOND, PLATINUM
AND GOLD RING**

*estimated total diamond weight: 2.25cts;
size: 6 1/2*

US\$1,500 - 2,500

**96
A DIAMOND AND 14K WHITE GOLD
PENDANT WITH CHAIN**

*estimated total diamond weight: 2.00cts;
length: 21in.*

US\$1,000 - 1,500



97



98



99

100



102



101

97
A DIAMOND AND 18K BI-COLOR GOLD WRISTWATCH
7j, unadjusted; dial signed Tiffany & Co.; case signed C+B, no. 1020, movement signed ETA, Swiss; estimated total diamond weight: 1.95cts; gross weight approximately: 36 grams; length: 6 1/2in.

US\$1,500 - 2,500

98
A PAIR OF JADEITE JADE, DIAMOND AND 18K WHITE GOLD EARRINGS
top signed Fred, pendants later added; length: 1in.

US\$1,000 - 1,500

GIA report #2135942271, dated October 22, 2011, stating: Jadeite Jade, natural color, no indications of impregnation.

99
A DEMANTOID GARNET, DIAMOND AND PLATINUM LINE BRACELET
estimated total diamond weight: 4.50cts; gross weight approximately: 43 grams; length: 7in.

US\$4,000 - 6,000

100
AN ART DECO DIAMOND AND PLATINUM LINE BRACELET, FRENCH, CIRCA 1915
with French assay marks; estimated total diamond weight: 6.50cts; length: 7in.

US\$3,500 - 5,500

101^Y
A CORAL, ENAMEL, DIAMOND AND 18K GOLD RING
oval coral cabochon approximately 25.0 x 16.0mm; size: 6 1/2

US\$2,500 - 3,500

102
A DIAMOND AND WHITE GOLD HEART BROOCH/PENDANT
estimated total diamond weight: 4.30cts; length: 1 1/4in.

US\$2,000 - 3,000



103

A DIAMOND AND GOLD PENDANT NECKLACE
 round brilliant-cut center diamond approximately 1.40cts; *estimated remaining diamond weight: 2.50cts; gross weight approximately: 42 grams; length: 16in.*
 US\$7,000 - 10,000

PROPERTY FROM THE COLLECTION OF A WASHINGTON, D.C. SOCIALITE

104
A 14K GOLD INTEGRAL BRACELET WRISTWATCH, LUCIEN PICCARD
dial and case signed Lucien Piccard, case no. 819143; gross weight approximately: 61 grams; length: 7 1/12in.
 US\$1,000 - 1,500

105

PROPERTY OF VARIOUS OWNERS
 105
A DIAMOND AND GOLD SOLITAIRE RING
 pear-shaped diamond: 1.64cts; size: 7 1/2
 US\$3,000 - 5,000

106
AN AMETHYST, DIAMOND AND 14K GOLD NECKLACE
estimated total diamond weight: 2.60cts; gross weight approximately: 45 grams; length: 16 1/2in.
 US\$1,500 - 2,000

107
A DIAMOND AND GOLD RING
 marquise brilliant-cut center diamond: 1.72cts; size: 6
 US\$7,500 - 8,500

GIA report #5172502138, dated February 26, 2016, stating: D color, SI1 clarity.

104

108
A GEM-SET, DIAMOND AND 14K GOLD BROOCH
gross weight approximately: 40 grams; length: 4 1/2in.
 US\$1,000 - 1,500

109
A DIAMOND, 18K GOLD AND LEATHER 'THOROUGHbred' WRISTWATCH, DAVID YURMAN
quartz; dial, case, clasp and strap signed David Yurman, case no. 09812, with Swiss assay marks; with extra strap and signed box
 US\$2,000 - 3,000

110
A RETRO DIAMOND, ROSE GOLD AND STYPTOR MINAUDIÈRE, VAN CLEEF & ARPELS, CIRCA 1940
signed Van Cleef & Arpels, no. 44336; with a black silk fitted pouch; dimensions: 6 x 4 7/8 x 3/4in.
 US\$2,000 - 3,000



106

108

107



109



110



111



115



112

114

**111
AN 18K GOLD POCKET WATCH
PENDANT**

*dial signed Eterna, case no. 3002755, with
Swiss marks; gross weight approximately: 72
grams; dimensions: 1 3/4 x 1 1/2in.*

US\$1,000 - 1,500

**112
A RETRO RUBY, DIAMOND AND GOLD
CLIP BROOCH, CIRCA 1940**

dimensions: 2 1/2 x 1 7/8in.

US\$5,000 - 7,000

113
No lot

**PROPERTY FROM THE
COLLECTION OF A NEW YORK
LADY**

114
**A RETRO 14K GOLD SNAKE CHAIN
COLLAR, CIRCA 1940**

approximately 90 grams; length: 15in.

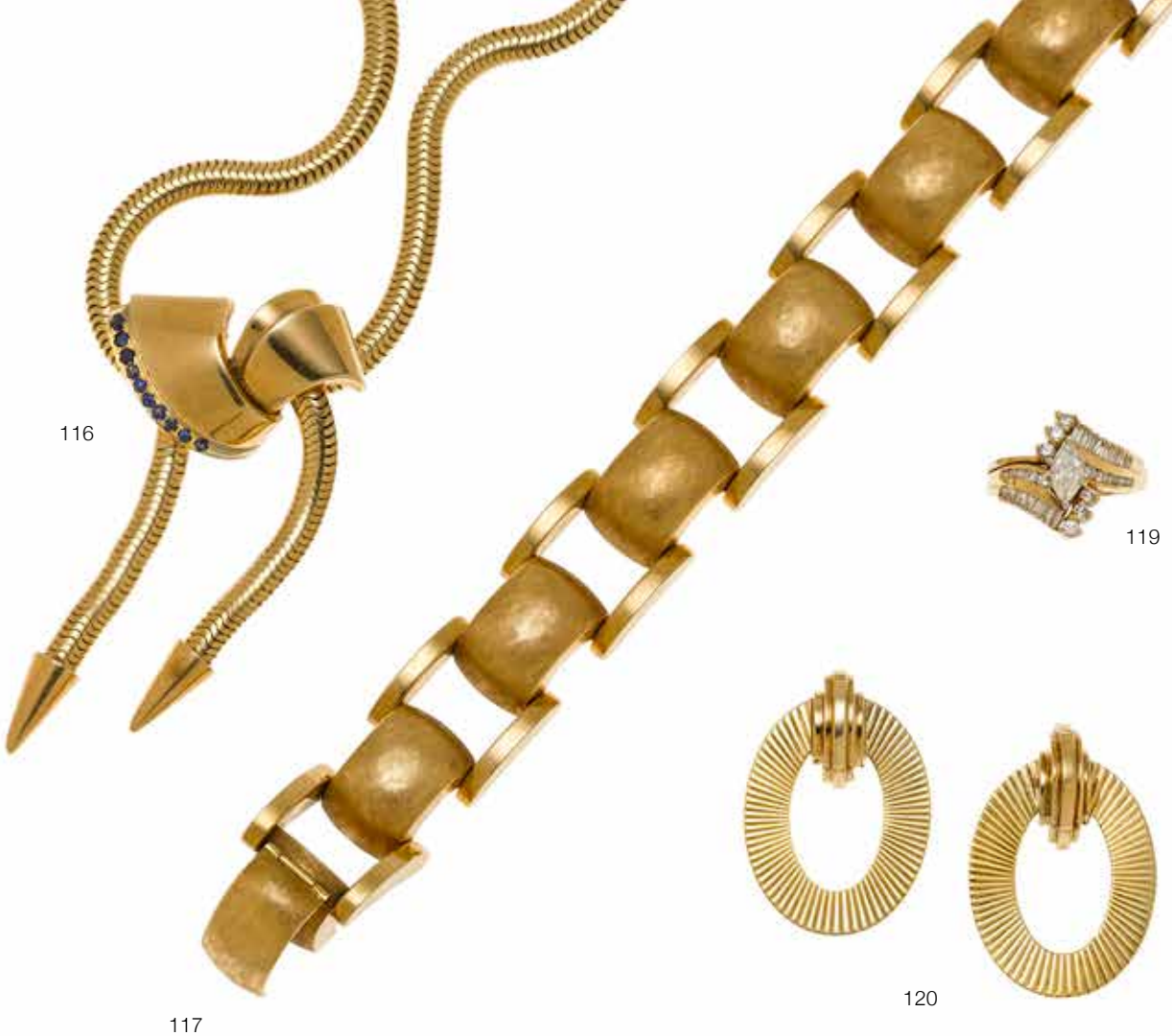
US\$2,000 - 3,000

PROPERTY OF VARIOUS OWNERS

115
**A RETRO CITRINE, RUBY AND 14K
GOLD RING, CIRCA 1940**

size: 7

US\$1,000 - 2,000



116

119

117

120

116
**A RETRO 14K GOLD, SAPPHIRE AND
 BLUE STONE BROOCH/PENDANT WITH
 SNAKE CHAIN, CIRCA 1940**

*gross weight approximately: 64 grams;
 length: 16in.*

US\$1,000 - 1,500

117
**A RETRO 14K GOLD BRACELET, CIRCA
 1945**

approximately 55 grams; length: 7 1/2in.

US\$1,200 - 1,800

118
 No lot

119
A DIAMOND AND 14K GOLD RING
*estimated total diamond weight: 1.50cts;
 size: 8*

US\$1,000 - 1,500

120
**A PAIR OF RETRO 14K GOLD CLIP
 BROOCHES,
 TIFFANY & CO., CIRCA 1940**
signed Tiffany & Co; length: 1 1/2in.

US\$1,800 - 2,500

121
A 9K GOLD COMPACT AND CIGARETTE CASE

the compact opening to reveal a mirror; both with English hallmarks and maker's mark, compact with fitted box; gross weight approximately: 216 grams; dimensions: 3 x 2 7/8in. (compact); 3 1/8 x 2 1/4in. (cigarette case)

US\$2,500 - 3,500

PROPERTY FROM THE COLLECTION OF A WASHINGTON, D.C. SOCIALITE

122
A DIAMOND AND BI-COLOR GOLD BRACELET

estimated total diamond weight: 1.50cts; length: 6 3/4in.

US\$2,500 - 3,500

PROPERTY OF VARIOUS OWNERS

123
AN 18K TRI-COLOR GOLD 'LEAVES' RING, FRANK GEHRY FOR TIFFANY & CO.

signed Gehry, Tiffany & Co.; size: 7

US\$1,000 - 1,500

124
A 14K GOLD COVERED DIAL WRISTWATCH

17j, unadjusted; movement signed Jos. Boillat Fils; gross weight approximately: 74 grams; length: 8in.

US\$1,500 - 2,500

125
AN ENAMEL, DIAMOND AND 18K GOLD BEAGLE BROOCH

dimensions: 1 3/8 x 1 1/8in.

US\$1,000 - 1,500

126
A TURQUOISE, DIAMOND AND GOLD PENDANT WITH CHAIN

estimated total diamond weight: 2.40cts; length: 38in.

US\$2,000 - 3,000

127
A TURQUOISE BEAD AND 14K GOLD NECKLACE

turquoise beads approximately 16.5 to 11.0mm; length: 24in.

US\$1,000 - 1,500

128
A STAR RUBY, DIAMOND AND BI-COLOR GOLD RING

oval star ruby cabochon approximately 17.9 x 16.0mm; estimated total diamond weight: 2.00cts; size: 6

US\$3,000 - 5,000

129
A DIAMOND AND 18K TRI-COLOR GOLD BANGLE BRACELET

estimated total diamond weight: 1.50cts; gross weight approximately: 67 grams; diameter: 2 5/8in.

US\$2,500 - 3,500



121

122

123



124



125



126

127



128



129



132

133

134

130

131

130
A TIGER'S EYE, DIAMOND AND 18K GOLD BUTTERFLY NECKLACE, VAN CLEEF & ARPELS

signed VCA, no. C4040E25; length: 17in.

US\$2,000 - 3,000

131
AN 18K GOLD BOW NECKLACE, VAN CLEEF & ARPELS

signed V.C.A. DR06.0JYG; length: 16 1/2in.

US\$1,200 - 1,800

132
A HIGH KARAT GOLD CHAIN NECKLACE

approximately 61 grams; length: 26 1/2in.

US\$2,000 - 3,000

133
A SET OF THREE TURQUOISE, GEM-SET AND 18K GOLD BIRD BROOCHES

gross weight approximately: 56 grams; length: 3in.

US\$2,000 - 3,000

134
A RUBY, DIAMOND, PLATINUM AND 18K GOLD RING

cushion-shaped ruby approximately 9.83 x 6.40 x 4.70mm; estimated total diamond weight: 1.40cts; size: 6

US\$3,000 - 5,000



135

135
A DIAMOND AND 14K GOLD BANGLE BRACELET

estimated total diamond weight: 7.00cts; gross weight approximately: 60 grams; diameter: 2 1/4in.

US\$5,000 - 7,000

136
A TURQUOISE, WOOD, YELLOW SAPPHIRE, DIAMOND AND 18K GOLD FLOWER BROOCH, SEAMAN SCHEPPS

signed Seaman Schepps, no. 16082; dimensions: 2 1/4 x 1 3/4in.

US\$3,000 - 5,000



136

138



137



139

137
A DIAMOND AND PLATINUM-TOPPED GOLD RING AND 14K GOLD BAND

old European-cut center diamond approximately 1.80cts; size: 8 1/2

US\$4,500 - 6,500

138
AN 18K GOLD 'CASMIR' COLLAR, CHOPARD

signed Chopard, Casmir, no. 9172315; approximately 175 grams; length: 15 1/2in.

US\$5,000 - 7,000

139
AN 18K GOLD 'CASMIR' CUFF BRACELET AND RING SET, CHOPARD

both signed Chopard, Casmir; gross weight approximately: 110 grams; bracelet diameter: 2 1/8in.; ring size: 8

US\$3,000 - 5,000



140

141

142

143

144

145

146

140
A RUBY, DIAMOND AND GOLD NECKLACE
estimated total diamond weight: 20.20cts; gross weight approximately: 56 grams; length: 15in.
US\$8,000 - 10,000

PROPERTY FROM THE ESTATE OF FAITH DOMERGUE
 141
A PAIR OF CULTURED PEARL, DIAMOND AND 18K GOLD EAR CLIPS
pearls approximately 10.4mm; length: 5/8in.
US\$2,000 - 3,000

PROPERTY FROM THE ESTATE OF ALICE ANNE WECKBAUGH
 142
A COLORED DIAMOND AND 18K GOLD RING
estimated total diamond weight: 4.15cts; size: 6 3/4 (colored diamonds untested for origin of color)
US\$1,800 - 2,500

PROPERTY OF VARIOUS OWNERS
 143
A DIAMOND AND 18K GOLD 'SERPENTI' RING, BVLGARI
signed Bvlgari; size: 6 1/2, adjustable
US\$2,000 - 3,000

144
A CULTURED PEARL, RUBY, DIAMOND AND 18K GOLD CHOKER
estimated total diamond weight: 2.85cts; length: 14in.
US\$2,000 - 3,000

145
A DIAMOND AND 18K GOLD RING
pear-shaped center diamond approximately: 3.25cts; estimated remaining diamond weight: 2.50cts; size: 7 1/2
US\$5,500 - 7,500

146
AN 18K GOLD 'MARRAKESH' BRACELET, PALOMA PICASSO FOR TIFFANY & CO.
signed Paloma Picasso, T&Co., Italy; approximately 54 grams; diameter: 2 1/2in.
US\$3,000 - 5,000



147
A DIAMOND AND 14K GOLD RING, JOSÉ HESS

signed José Hess, no. 118266; estimated total diamond weight: 2.50cts; size: 7 1/4

US\$2,000 - 3,000

148
A DIAMOND AND 14K BI-COLOR GOLD WRISTWATCH

17j, unadjusted; movement signed Exello Watch Co., Swiss; estimated total diamond weight: 2.15cts; gross weight approximately: 67 grams; length: 6 1/4in.

US\$2,500 - 3,500

149
AN ONYX, DIAMOND AND 18K GOLD NECKLACE AND EAR CLIP SET, ITALIAN PAMPILLONIA

both signed Pampillonìa, Italy; estimated total diamond weight: 2.80cts; gross weight approximately: 59 grams; necklace length: 16in.; ear clip length: 3/4in.

US\$3,000 - 5,000

150
A PAIR OF RUBY, DIAMOND AND 14K GOLD EARRINGS

estimated total diamond weight: 2.50cts; length: 7/8in.

US\$2,000 - 3,000

PROPERTY FROM THE COLLECTION OF A WASHINGTON, D.C. SOCIALITE

151
A PAIR OF ENAMEL, DIAMOND AND 14K GOLD EARRINGS

estimated total diamond weight: 1.25cts; length: 1in.

US\$1,000 - 1,500

PROPERTY OF VARIOUS OWNERS

152 ^Y
A MOTHER-OF-PEARL, DIAMOND AND 18K GOLD 'ALHAMBRA' RING, VAN CLEEF & ARPELS

signed VCA, no. CF1042; size: 5 3/4

US\$1,800 - 2,500

153
A PAIR OF CULTURED PEARL, DIAMOND AND GOLD PENDANT EARRINGS

pearls approximately 13.0mm; estimated total diamond weight: 3.00cts; length: 2 1/8in.

US\$1,500 - 2,500



154^Y
A CARVED CORAL, DIAMOND AND GOLD ROSE BROOCH AND EAR CLIP SET
brooch dimensions: 2 3/4 x 1 3/4in.; ear clip length: 1 1/4in.

US\$1,200 - 1,800

155^Y
A CARVED JADE, LAPIS, CORAL, DIAMOND AND GOLD BUTTERFLY BROOCH
dimensions: 2 x 1 3/4in.

US\$1,200 - 1,800

156
A PAIR OF LAPIS LAZULI AND 18K GOLD EAR CLIPS, SEAMAN SCHEPPS
signed Seaman Schepps, no. 7089; length: 1in.

US\$2,000 - 3,000

157
A JADEITE JADE, GEM-SET AND GOLD BEAD NECKLACE
together with a detachable pendant; necklace length: 26 1/2in.; pendant length: 3in.

US\$2,000 - 4,000

Mason-Kay report #160407-2, dated April 7, 2016, stating the jadeite jade in the pendant as: Natural Jadeite Jade - 'A' Jade.

158
A JADEITE JADE, COLORED DIAMOND, DIAMOND, PINK SAPPHIRE AND 18K GOLD RING
oval jadeite jade cabochon approximately 15.8 x 12.5 x 6.7mm; estimated total diamond weight: 2.00cts; size: 7 (colored diamonds untested for origin of color)

US\$5,000 - 7,000

Mason-Kay report #160406-4, dated April 6, 2016, stating: Natural Jadeite Jade - 'A' Jade.



159

159
A PAIR OF JADEITE JADE, CULTURED PEARL AND GOLD EAR PENDANTS
length: 1 5/8in.

US\$1,000 - 1,500



160

160
A CARVED JADE, HARDSTONE AND GOLD CHARM BRACELET
suspending six charms; length: 7 1/2in.

US\$1,000 - 1,500



161

161
A PAIR OF 18K BI-COLOR GOLD BANGLE BRACELETS, CHAUMET, FRENCH
signed Chaumet, Paris, no. 189861 and 198712; with French assay marks; with signed pouch and certificate; gross weight approximately: 58 grams; diameter: 2 1/4in.

US\$1,000 - 1,500



162

162
A JADEITE JADE AND 18K GOLD RING
oval jadeite jade cabochon: 8.55cts; size: 5 3/4

US\$3,000 - 5,000

GIA report #1152533743, dated July 11, 2013, stating: jadeite jade, natural color, no indications of impregnation.



163



164

166



167

168

PROPERTY FROM THE ESTATE OF FAITH DOMERGUE

163 ^Y
A CORAL AND 18K GOLD NECKLACE, TOGETHER WITH A CORAL, DIAMOND AND 18K GOLD RING, BVLGARI

both signed Bvlgari; necklace length: 14 3/4in.; ring size: 6

US\$4,000 - 6,500

PROPERTY OF ANOTHER OWNER

164
A TOURMALINE, DIAMOND AND 18K GOLD RING, BIBIGI, ITALY

tourmaline ball approximately 12.4mm; signed Bibigi, with Italian assay marks; size: 4

US\$1,000 - 2,000

165
No lot

PROPERTY FROM THE ESTATE OF FAITH DOMERGUE

166 ^Y
THREE CULTURED PEARL, CORAL BEAD AND 18K GOLD CUFF BRACELETS, BVLGARI

two signed Bvlgari with maker's mark; one unsigned; gross weight approximately: 67 grams; diameter: 2 1/4in.

US\$4,000 - 6,000



PROPERTY OF ANOTHER OWNER

167
A 14K GOLD LONG CHAIN NECKLACE

gross weight approximately: 130 grams; length: 35in.

US\$3,500 - 4,000

PROPERTY FROM THE ESTATE OF FAITH DOMERGUE

168 ^Y
A CORAL AND 18K GOLD LONG CHAIN, BVLGARI

signed Bvlgari; length: 43in.

US\$2,000 - 3,000

PROPERTY OF ANOTHER OWNER

169
A PAIR OF COLORED DIAMOND, DIAMOND AND ROSE GOLD EARRINGS

estimated total diamond weight: 5.00cts; length: 1in. (colored diamonds untested for origin of color)

US\$3,800 - 4,500

PROPERTY FROM THE COLLECTION OF A NEW YORK LADY

170
TWO 14K GOLD FANCY LINK AND ROPE CHAIN NECKLACES

gross weight approximately: 83 grams; length: 29 and 27in.

US\$1,800 - 2,500

PROPERTY OF VARIOUS OWNERS

171
A DIAMOND AND 14K ROSE GOLD RING
cushion-shaped diamond: 2.01cts; size: 6 3/4

US\$1,200 - 1,800



172



173

174

175

176

172
A DIAMOND AND 14K GOLD BRACELET
*estimated total diamond weight: 2.40cts;
 gross weight approximately: 87 grams;
 length: 8in.*

US\$3,000 - 5,000

173
**A FRESHWATER CULTURED PEARL,
 CITRINE, GEM-SET AND GOLD FLOWER
 BROOCH/PENDANT**
dimensions: 2 1/4 x 1 3/4in.

US\$800 - 1,200

174
**A PAIR OF RUBY, EMERALD, DIAMOND
 AND 18K GOLD CRAB EARRINGS**
dimensions: 1 1/4 x 1 1/8in.

US\$1,000 - 1,200

175
**A SAPPHIRE, DIAMOND AND 18K GOLD
 RING**
*pear-shaped sapphire approximately 8.75 x
 6.90 x 4.00mm; size: 7*

US\$2,000 - 3,000

176
**A PAIR OF RUBY, DIAMOND AND 18K
 GOLD EARRINGS**
*estimated total diamond weight: 1.50cts;
 length: 7/8in.*

US\$1,000 - 1,500



177



178



179



181



180



177
A CARVED ROSE QUARTZ, GEM-SET AND 14K GOLD BROOCH

bees set with emerald, opal and sapphire;
dimensions: 2 1/4 x 1 5/8in.

US\$800 - 1,000

178
A RUBY, DIAMOND AND 18K GOLD RING, VAN CLEEF & ARPELS

signed VCA, no. ROCT81 PICT39 P5499 G1 (partially indistinct); estimated total diamond weight: 1.40cts; size: 6 3/4

US\$4,000 - 6,000

179
A COLORED CULTURED PEARL, DIAMOND AND GOLD NECKLACE

semi-baroque pearls approximately 14.0 to 12.0mm; *estimated total diamond weight: 3.00cts; length: 17 1/2in.* (colored cultured pearls untested for origin of color)

US\$2,000 - 3,000

180
A PAIR OF FAUX PEARL, RUBY AND 18K GOLD FLOWER EARRINGS

gross weight approximately: 32 grams; diameter: 1 5/16in.

US\$1,800 - 2,500

181
A DIAMOND, GEM-SET AND 14K GOLD LEAF RING

size: 7

US\$1,000 - 1,500



182
A PAIR OF 18K GOLD EAR CLIPS, WANDER, FRENCH
signed Wander, France; gross weight approximately: 38 grams; length: 1 5/8in.

US\$1,500 - 2,000

183
A PAIR OF 18K GOLD FEATHER EAR CLIPS, VERDURA
signed Verdura; length: 1 1/8in.

US\$2,000 - 3,000

184
A PAIR OF DIAMOND, 18K GOLD AND PLATINUM 'SUNFLOWER' EAR CLIPS, TIFFANY & CO.
signed Tiffany & Co.; estimated total diamond weight: 1.15cts; length: 7/8in.

US\$2,000 - 3,000

185
A DIAMOND AND 18K GOLD GREEK KEY NECKLACE
estimated total diamond weight: 1.25cts; gross weight approximately: 105 grams; length: 18in.

US\$3,000 - 5,000

186
A DIAMOND, 18K GOLD AND PLATINUM SOLITAIRE RING
round brilliant-cut diamond: 1.04cts; size: 7 1/2

US\$5,000 - 8,000

GIA report #8532789, dated February 26, 2016, stating: D color, VS2 clarity.

187
A DIAMOND AND 18K GOLD THREE STONE RING, JEAN-FRANÇOIS ALBERT
round brilliant-cut center diamond: 1.09cts; signed JFA; estimated remaining diamond weight: 1.00ct; size: 6 1/2

US\$3,000 - 5,000

AGS report #0004629104, dated December 8, 2003, stating: the side diamond weighing 0.56ct as H color, SI2 clarity.



189

188

190

PROPERTY FROM THE ESTATE OF ALICE ANNE WECKBAUGH

**188
A COLLECTION OF AMETHYST, CULTURED PEARL, DIAMOND AND GOLD JEWELRY**

comprising a necklace, bracelet and ring; necklace length: 32in.; bracelet length: 7in.; ring size: 6

US\$1,500 - 2,800

PROPERTY FROM THE ESTATE OF ALAN J. BRODER, NEW YORK

**189
A DIAMOND AND 18K GOLD RING, ALFRED KARRAM**

round brilliant-cut diamond: 3.93cts; signed *Karram*; size: 5

US\$15,000 - 25,000

PROPERTY OF VARIOUS OWNERS

**190
A DIAMOND, GEM-SET AND 18K GOLD BROOCH**

gross weight approximately: 48 grams; dimensions: 2 5/8 x 2 1/4in.

US\$1,500 - 2,500



191



192

193



194



195



196

198

A PAIR OF MODERNIST 14K GOLD EARRINGS, MERRY RENK

signed Renk; length: 1 1/2in.

US\$800 - 1,200

199

FOUR DIAMOND, BLACK DIAMOND AND 18K TRI-COLOR GOLD BANGLE BRACELETS

estimated total diamond weight: 5.20cts; gross weight approximately: 80 grams; diameter: 2 1/2in. (colored diamonds untested for origin of color)

US\$3,000 - 5,000

200

A DIAMOND AND 18K GOLD ARTICULATED BANGLE BRACELET

gross weight approximately: 68 grams; diameter: 2 3/4in.

US\$2,500 - 3,500

201

A PAIR OF GEM-SET, DIAMOND AND 18K GOLD HEART EARRINGS

estimated total diamond weight: 6.50cts; gross weight approximately: 42 grams; length: 1 1/2in.

US\$2,000 - 3,000

191 ^Y

A GEM-SET, DIAMOND AND 14K GOLD BANGLE BRACELET, ASCH GROSSBARDT

inlaid with mother-of-pearl, onyx, malachite and coral; signed OAVG; gross weight approximately: 62 grams; diameter: 2 1/4in.

US\$3,000 - 5,000

192 ^Y

A PAIR OF GEM-SET, DIAMOND AND 14K GOLD EARRINGS, ASCH GROSSBARDT

inlaid with mother-of-pearl, onyx, lapis lazuli, malachite and coral; signed OAVG; diameter: 1in.

US\$800 - 1,200

193

A 14K GOLD OMEGA COLLAR

approximately 63 grams; length: 17in.

US\$1,300 - 1,600

194 ^Y

A GEM-SET, DIAMOND AND 14K GOLD BIRD BROOCH, ASCH GROSSBARDT

inlaid with mother-of-pearl, lapis lazuli, malachite and onyx; signed OAVG; length: 1 3/4in.

US\$800 - 1,200

195 ^Y

A CORAL, DIAMOND AND 18K WHITE GOLD RING

oval coral cabochon: 23.54 x 15.86 x 7.72mm; estimated total diamond weight: 1.00ct; size: 6 1/2

US\$3,000 - 5,000

GIA report #116233940, dated July 02, 2014, stating: no indications of dye detected.

196

AN EMERALD, DIAMOND AND PLATINUM RING

estimated total diamond weight: 2.00cts; size: 5 3/4

US\$1,800 - 2,500

197

A DIAMOND AND 18K GOLD CIRCLE NECKLACE AND PAIR OF EARRINGS, ROBERT LEE MORRIS

signed RLM; gross weight approximately: 32 grams; necklace length: 16in.; earring length: 2 1/2in.

US\$1,200 - 1,800



197

198

200



199



201



202
A DIAMOND AND 18K GOLD RING
estimated total diamond weight: 1.20cts;
size: 7 1/2

US\$1,000 - 2,000

203
A DIAMOND AND 18K BI-COLOR GOLD BAND, CARTIER, FRENCH
signed Cartier, no. 751740, with French assay marks; size: 6

US\$2,000 - 3,000

204
A DIAMOND AND 18K GOLD ROLLING RING, TIFFANY & CO., FRENCH
signed Tiffany & Co, France; size: 5 1/2

US\$1,500 - 2,500

205
AN 18K YELLOW GOLD AND DIAMOND BRACELET, VAHE NALTCHAYAN, 1986
signed Vahe Naltchayan, 1986, USA;
estimated total diamond weight: 2.00cts;
gross weight approximately: 78 grams;
diameter: 2 3/8in.

US\$4,000 - 6,000

206
A BRONZE COIN, DIAMOND AND GOLD PENDANT NECKLACE
estimated total diamond weight: 2.40cts;
gross weight approximately: 52 grams;
length: 22in.

US\$1,500 - 2,000

207
AN 18K GOLD AND DIAMOND SNAKE BANGLE BRACELET
gross weight approximately: 93 grams;
diameter adjustable

US\$3,000 - 5,000



**PROPERTY FROM THE ESTATE
OF ALICE ANNE WECKBAUGH**

208
**A PAIR OF TURQUOISE, DIAMOND AND
18K GOLD EAR CLIPS AND RING**
*estimated total diamond weight: 1.15cts; ear
clip diameter: 11/16in.; ring size: 5*

US\$1,200 - 1,800

PROPERTY OF VARIOUS OWNERS

209
**TWO 18K GOLD RINGS AND PAIR OF
EARRINGS, CHAUMET**
*signed Chaumet, Paris, ring no. 328574,
earrings no. 178723 and 173509; gross
weight approximately: 32 grams; ring size:
7 1/4*

US\$1,000 - 1,500

210
**A BRONZE COIN, DIAMOND AND 14K
GOLD NECKLACE**

*gross weight approximately: 146 grams;
length: 17in.*

US\$2,000 - 3,000

211
**THREE DIAMOND AND 14K GOLD
BANGLE BRACELETS**

*estimated total diamond weight: 3.00cts;
gross weight approximately: 119 grams;
diameter: 2 1/8in.*

US\$2,500 - 3,500



212
A RUBY, DIAMOND AND 18K GOLD LINE BRACELET
estimated total diamond weight: 2.00cts; length: 7in.

US\$2,000 - 3,000

213
A PAIR OF SAPPHIRE, EMERALD, DIAMOND, PLATINUM AND 18K GOLD EARRINGS
oval sapphire cabochons approximately 10.6 x 8.6mm; estimated total diamond weight: 1.25cts; length: 1in.

US\$1,500 - 2,500

214
A RUBY, SAPPHIRE AND 18K GOLD NECKLACE
convertible into a bracelet; gross weight approximately: 164 grams; length: 16in.

US\$4,500 - 6,500

215
A SAPPHIRE, RUBY, DIAMOND AND 18K WHITE GOLD FLAG BROOCH, JEAN VITAU, 2001
signed Jean Vitau, 2001; estimated total diamond weight: 1.95 carats; dimensions: 1 x 7/8in.

US\$2,000 - 3,000

216
A DIAMOND AND BI-COLOR GOLD RING
estimated total diamond weight: 3.00cts; size: 6

US\$1,500 - 2,500

PROPERTY FROM THE ESTATE OF FAITH DOMERGUE

217
A PAIR OF SAPPHIRE AND 18K GOLD EARRINGS, BVLGARI
signed Bvlgari; length: 5/8in.

US\$2,000 - 3,000

PROPERTY OF ANOTHER OWNER

218
A SAPPHIRE, DIAMOND AND 18K GOLD RING
oval-shaped sapphire approximately 1.25cts; size: 5

US\$1,500 - 2,500



219



221



222



220



223



224



225

PROPERTY FROM THE ESTATE OF ALICE ANNE WECKBAUGH

219^Y

A DIAMOND, CORAL AND 18K GOLD INTEGRAL BRACELET WRISTWATCH, PIAGET

dial and bracelet signed Piaget, case no. 9706 A6 305154, with Swiss marks; gross weight approximately: 32 grams; length: 6 1/2in.

US\$2,000 - 3,000

PROPERTY OF VARIOUS OWNERS

220

A PAIR OF DIAMOND AND 14K GOLD EAR CLIPS

estimated total diamond weight: 1.80cts; length: 1 1/8in.

US\$1,000 - 1,500

221

A PAIR OF LAPIS LAZULI, DIAMOND AND 18K GOLD CUFFLINKS

estimated total diamond weight: 1.00ct; length: 7/8in.

US\$1,200 - 1,800

222^Y

A CORAL, DIAMOND AND 18K WHITE GOLD RING

oval coral cabochon approximately 16.65 x 11.95 x 5.05mm; size: 6 1/2

US\$1,500 - 2,500

GIA report #1132843420, dated September 20, 2011, stating: no indications of dye detected.

223

A DIAMOND AND 18K GOLD BRACELET

estimated total diamond weight: 1.20cts; gross weight approximately: 40 grams; length: 7 1/4in.

US\$1,500 - 2,500

224

A SAPPHIRE AND 18K TRI-COLOR GOLD TORSADE BANGLE BRACELET, CARTIER

signed Cartier, no. 937953; diameter: 2 1/8in.

US\$3,000 - 5,000

225^Y

A CORAL, SAPPHIRE, DIAMOND AND 18K GOLD TOUCAN BROOCH

dimensions: 2 1/4 x 1 1/2in.

US\$1,500 - 2,500

226
AN ENAMEL, DIAMOND AND 18K GOLD RING, VAN CLEEF & ARPELS

signed VCA, Italy, no. 5V753.2; size: 6

US\$2,000 - 3,000

227
A PAIR OF 18K GOLD STARFISH EAR CLIPS, TIFFANY & CO.

signed T&Co., with signed box; length: 1in.

US\$800 - 1,200

228
A DIAMOND AND BI-COLOR GOLD FLOWER BROOCH

estimated total diamond weight: 19.00cts; gross weight approximately: 43 grams; length: 3 1/8in.

US\$7,500 - 9,500

PROPERTY FROM THE ESTATE OF ALICE ANNE WECKBAUGH

229
AN OPAL, DIAMOND AND GOLD BANGLE BRACELET, TOGETHER WITH A PAIR OF EAR PENDANTS

estimated total diamond weight: 2.00cts; gross weight approximately: 41 grams; bangle diameter: 2 1/8in.; ear pendant length: 1 1/2in.

US\$1,000 - 2,000

230
No lot

PROPERTY FROM THE COLLECTION OF A NEW YORK LADY

231
A RETRO 14K GOLD SQUARE LINK BRACELET, CIRCA 1940
approximately 57 grams; length: 7in.

US\$1,500 - 2,000

PROPERTY FROM THE ESTATE OF ALICE ANNE WECKBAUGH

232^Y
A COLLECTION OF CORAL, DIAMOND AND GOLD JEWELRY

comprising a bead necklace, brooch, ring and pair of ear pendants; estimated total diamond weight: 1.70cts; necklace length: 19in.; ring size: 7 1/4

US\$3,000 - 5,000

PROPERTY OF VARIOUS OWNERS

233
A PAIR OF DIAMOND AND BI-COLOR GOLD EAR CLIPS

estimated total diamond weight: 3.50cts; length: 1in.

US\$2,000 - 3,000





229



231



232



233





235



234



237



236



238



239

234
A PAIR OF 18K GOLD 'HAPPY DIAMONDS' HEART-SHAPED EARRINGS, CHOPARD
signed Chopard, no. 9737338; length: 3/8in.

US\$1,000 - 1,500

235 ^Y
A GEM-SET, MOTHER-OF-PEARL AND 18K GOLD COLLAR, ITALIAN
including pink tourmaline, amethyst, citrine and peridot; with Italian assay marks; length: 14 1/2in.

US\$3,000 - 5,000

236
A PAIR OF CITRINE, DIAMOND, SAPPHIRE AND WHITE GOLD EARRINGS
estimated total diamond weight: 1.45cts; length: 1 3/4in.

US\$3,000 - 5,000

237
A DIAMOND AND 18K GOLD RING
estimated total diamond weight: 1.50cts; size: 7

US\$1,000 - 1,500

238
A PINK SAPPHIRE, SAPPHIRE, DIAMOND AND 18K WHITE GOLD BYPASS RING
oval-shaped pink sapphire: 2.90cts; oval-shaped blue sapphire: 3.03cts; size: 7

US\$2,000 - 3,000

GIA report #5161005300, dated April 15, 2014, stating the pink sapphire as: Sri Lanka origin, no indications of heating.

AGL report #CS59129, dated February 18, 2014, stating the blue sapphire as: Ceylon (Sri Lanka) origin, no gemological evidence of heat.

239
A 14K GOLD LINK BRACELET, TIFFANY & CO.
signed Tiffany; approximately 61 grams; length: 7 1/2in.

US\$1,000 - 1,500



240

240
A PAIR OF GEM-SET, DIAMOND, BLACKENED SILVER AND GOLD PENDANT EARRINGS

length: 3 1/2in.

US\$1,000 - 1,500

241
A PAIR OF COLORED DIAMOND, DIAMOND AND 18K ROSE GOLD EARRINGS

dimensions: 3/8 x 3/8in.

US\$2,000 - 3,000

GIA report #17239616, dated June 05, 2008, stating the modified square brilliant-cut diamond weighing 0.48 carat as: natural fancy light green-yellow color.

GIA report #17239618, dated June 02, 2016, stating the modified square brilliant-cut diamond weighing 0.47 carat as: natural light green-yellow color.

241

242

242
A COLORED DIAMOND, DIAMOND AND BI-COLOR GOLD BAND

estimated total diamond weight: 3.90 carats; size: 7 (colored diamonds untested for origin of color)

US\$2,000 - 3,000

243
A DIAMOND AND 18K GOLD WRISTWATCH

quartz; deployant clasp; case, dial and bracelet signed Cartier, case no. 839510059; with French import marks; estimated total diamond weight: 2.70cts; gross weight approximately: 79 grams; length: 6 1/2in. (diamonds later added)

US\$2,500 - 3,500

243

245

244

244
A CITRINE, DIAMOND AND WHITE GOLD RING

estimated total diamond weight: 1.75cts; size: 6

US\$1,800 - 2,500

245
A DIAMOND AND 14K GOLD BRACELET

estimated total diamond weight: 5.00cts; length: 7in.

US\$2,000 - 3,000



246

247

248

249

250

246
A PAIR OF 18K GOLD 'HAPPY DIAMONDS' HEART-SHAPED EARRINGS, CHOPARD
signed Chopard, no. 4791; length: 7/16in.

US\$1,800 - 2,500

247
A CARVED TOURMALINE AND 18K GOLD FLUTED RING, BOUCHERON, FRENCH
signed Boucheron, no. B009X4297, with French assay marks; size: 6

US\$3,500 - 5,000

248
A RUBELLITE TOURMALINE, DIAMOND AND GOLD RING
oval-shaped tourmaline: 5.13cts; estimated total diamond weight: 2.55cts.; size: 6 1/2

US\$2,500 - 3,500

PROPERTY FROM THE ESTATE OF ALICE ANNE WECKBAUGH, LOT 249

249
A PINK TOPAZ, DIAMOND AND 14K GOLD BANGLE BRACELET
gross weight approximately: 50 grams; diameter: 2in.

US\$1,500 - 2,500

250
A TOURMALINE, DIAMOND AND 18K GOLD COLLAR
estimated total diamond weight: 2.85cts; gross weight approximately: 164 grams; length: 15 1/2in.

US\$6,000 - 8,000



251

252

253

254

255

256

251
A DIAMOND AND 18K BI-COLOR GOLD NECKLACE

gross weight approximately: 50 grams

US\$1,500 - 2,000

252
A PAIR OF DIAMOND AND 18K BI-COLOR GOLD EARRINGS, ITALIAN

estimated total diamond weight: 2.50cts; diameter: 1in.

US\$4,000 - 6,000

253
A CAT'S EYE CHRYSOBERYL, DIAMOND AND 14K GOLD RING

cat's eye chrysoberyl cabochon approximately 10.3 x 10.3mm; size: 9

US\$3,000 - 5,000

254
A DIAMOND AND 18K GOLD LARIAT NECKLACE, TIFFANY & CO.

signed T&Co.; length: 37in.

US\$2,800 - 3,500

255
A PERIDOT, CITRINE, DIAMOND AND 18K GOLD BANGLE BRACELET

gross weight approximately: 108 grams; diameter: 2 1/4in.

US\$3,000 - 5,000

256
A DIAMOND AND 14K GOLD HEART LINK BRACELET

estimated total diamond weight: 4.50cts; length: 8in.

US\$1,500 - 2,000



258

257



259



261



262

PROPERTY FROM THE ESTATE OF ALICE ANNE WECKBAUGH

**257
A PAIR OF GEM-SET, DIAMOND AND GOLD EAR CLIPS**

set with emerald, sapphire and ruby cabochons; length: 7/8in.

US\$1,500 - 2,500

PROPERTY FROM THE COLLECTION OF A WASHINGTON, D.C. SOCIALITE

**258
AN AMETHYST, DIAMOND AND 18K GOLD NECKLACE**

estimated total diamond weight: 4.65cts; gross weight approximately: 96 grams; length: 15 1/2in.

US\$3,000 - 5,000

PROPERTY OF VARIOUS OWNERS

**259
A DIAMOND AND 18K BI-COLOR GOLD CUFF BRACELET, CARTIER**

signed Cartier, no. 00017; gross weight approximately: 44 grams; diameter: 2 1/4in.

US\$4,000 - 6,000

260
No lot

**261
A DIAMOND, RUBY AND WHITE GOLD RING**

round brilliant-cut center diamonds approximately 1.10 and 0.90cts; size: 7 3/4

US\$3,500 - 4,500

**262
A DIAMOND, ENAMEL AND 18K GOLD BROOCH, KUTCHINSKY, LONDON, 1968**

signed Kutchinsky, with English hallmarks, London, 1968; estimated total diamond weight: 1.15cts; length: 2in.

US\$1,800 - 2,500



263

263
A DIAMOND AND 18K GOLD RING
 round brilliant-cut center diamond: 1.00ct;
 size: 10

US\$5,000 - 7,000

GIA report #2175487930, dated February 17, 2016, stating: E color, VS1 clarity.

264
AN EMERALD, DIAMOND AND GOLD HEART MOTIF NECKLACE, TOGETHER WITH A PAIR OF GREEN GLASS, DIAMOND AND GOLD EARRINGS

*estimated total diamond weight: 6.80cts;
 gross weight approximately: 84 grams;
 necklace length: 16in.; earring length: 5/8in.*

US\$5,000 - 7,000



264



266

266
A RUBY, DIAMOND AND GOLD RING
 oval ruby cabochon approximately 12.10 x 11.90 x 7.25mm; *estimated total diamond weight: 1.10cts; size: 6 1/2*

*estimated total diamond weight: 5.00cts;
 gross weight approximately: 29 grams;
 length: 1 1/8in.*

US\$2,000 - 3,000

265
A PAIR OF RUBY, DIAMOND, PLATINUM AND GOLD FLOWER EAR CLIPS
*estimated total diamond weight: 5.00cts;
 gross weight approximately: 29 grams;
 length: 1 1/8in.*

US\$1,000 - 1,500

GIA report #5151825628, dated January 06, 2014, stating: no indications of heating.



267

267
A RUBY, DIAMOND AND BI-COLOR GOLD BRACELET

*estimated total diamond weight: 5.00cts;
 gross weight approximately: 29 grams;
 length: 6 3/4in.*

US\$3,500 - 5,500

268
A DIAMOND, 18K GOLD AND PLATINUM CUFF BRACELET

*estimated total diamond weight: 3.75cts;
 gross weight approximately: 74 grams;
 diameter: 2 1/4in.*

US\$3,500 - 5,500



268



269



271



270



272



273

269
A PAIR OF CULTURED PEARL, DIAMOND AND 18K GOLD EARCLIPS
pearls approximately 11.0 and 6.0mm;
length: 1in.

US\$1,000 - 1,500

270
A DIAMOND AND 18K GOLD SNAKE COLLAR AND BANGLE BRACELET
gross weight approximately: 94 grams;
necklace length: 15 1/2in.; bangle diameter:
2 3/8in.

US\$4,000 - 6,000

271
AN EMERALD, DIAMOND AND 18K GOLD RING, CARTIER
signed Cartier, no. 619; size: 5 3/4

US\$1,000 - 1,500

PROPERTY FROM THE ESTATE OF RUTH RODORMER ROBINSON

272^Y
A CARVED CORAL, DIAMOND AND 18K GOLD BUDDHA PENDANT/BROOCH
dimensions: 2 3/8 x 1 5/8in.

US\$3,000 - 5,000

273^Y
A PAIR OF CORAL, DIAMOND AND 18K GOLD EARRINGS
estimated total diamond weight: 3.95cts;
length: 1 1/2in.

US\$2,500 - 3,500



274



275

276



277

PROPERTY OF VARIOUS OWNERS

274
A BAROQUE CULTURED PEARL, EMERALD, DIAMOND AND 14K GOLD RING

pearl approximately 14.8 x 12.0mm; size: 5

US\$2,500 - 3,500

275
A GOLD LINK NECKLACE
approximately 40 grams; length: 16 1/2in.

US\$800 - 1,200

276^Y
A CARVED CORAL FRAGMENT

dimensions: 3 1/2 x 3in.

US\$2,000 - 3,000

277
A PAIR OF CITRINE, DIAMOND AND 18K BI-COLOR GOLD FLOWER EARRINGS

diameter: 1in.

US\$2,000 - 3,000

278
No lot



279



280



281



282

283

284

279

A TANZANITE, DIAMOND AND BI-COLOR GOLD RING

oval-shaped tanzanite approximately 19.55 x 14.30 x 11.25mm; *estimated total diamond weight: 4.20cts; size: 7*

US\$10,000 - 15,000

280

A RUBY, SAPPHIRE AND GOLD PENDANT WITH CHAIN, TOGETHER WITH A PAIR OF EARRINGS

gross weight approximately: 37 grams; pendant length: 1 1/2in.; earring length: 15/16in.

US\$4,000 - 6,000

281

A SAPPHIRE, DIAMOND AND 18K GOLD RING

oval-shaped sapphire: 5.68cts; *estimated total diamond weight: 1.20cts; size: 6 1/2*

US\$12,000 - 15,000

GRS report #2014-0411437, dated May 27, 2014, stating: "Royal Blue", Burma (Myanmar) origin, no indication of thermal treatment.

282

A DIAMOND AND 14K GOLD LINE BRACELET

estimated total diamond weight: 4.50cts; length: 7in.

US\$1,500 - 2,000

283

A DIAMOND AND ROSE GOLD CHAIN NECKLACE

estimated total diamond weight: 9.20cts; length: 23 1/2in.

US\$4,000 - 6,000

284

AN EMERALD, RUBY, DIAMOND AND 18K GOLD BANGLE BRACELET

gross weight approximately: 61 grams; diameter: 2 1/8in.

US\$1,000 - 1,500



285

**285
A DIAMOND AND 14K GOLD 'X' LINK BRACELET**

estimated total diamond weight: 4.50cts; length: 8in.

US\$1,500 - 2,000

**286
AN EMERALD, DIAMOND AND 14K GOLD NECKLACE**

pear-shaped emeralds: 9.87 and 7.00cts; estimated total diamond weight: 6.80cts; length: 16 1/4in.

US\$6,500 - 8,500



286

**287
A DIAMOND, ONYX AND 18K GOLD INTEGRAL BRACELET WRISTWATCH, BAUME & MERCIER**

dial signed Baume & Mercier, Geneve; case no. 773278/38336 9; with signed box and papers; gross weight approximately: 60 grams; length: 7in.

US\$1,500 - 2,000

PROPERTY FROM THE ESTATE OF ALICE ANNE WECKBAUGH

**288
AN EMERALD, DIAMOND AND GOLD RING**

square step-cut emerald approximately 11.65 x 11.55 x 7.50mm; estimated total diamond weight: 1.20cts; size: 5 1/4

US\$2,000 - 3,000



287



288



289



290

PROPERTY OF VARIOUS OWNERS

**289
A RUBELLITE TOURMALINE, DIAMOND AND 18K GOLD NECKLACE**

oval-shaped tourmaline approximately 15.70 x 11.50 x 6.30mm; estimated total diamond weight: 9.20cts; gross weight approximately: 52 grams; length: 16in.

US\$6,000 - 8,000

**290
AN EMERALD, DIAMOND AND 18K GOLD RING**

size: 5

US\$1,500 - 2,500



293

294

292

291

291
A PAIR OF 18K GOLD AND DIAMOND 'CASMIR' EARRINGS, CHOPARD

signed Chopard, Geneva, Casmir; estimated total diamond weight: 1.40cts; length: 7/8in.

US\$1,500 - 2,500

292
A DIAMOND AND 18K GOLD 'REVERSO' LADY'S WRISTWATCH, JAEGER-LECOULTRE

with later added 18k gold bracelet; dial and case signed Jaeger-LeCoultre, Reverso, with Swiss marks; case no. 1830132; length: 6 1/2in.

US\$3,000 - 5,000

293^Y
A CORAL, CULTURED PEARL, DIAMOND AND GOLD TORSADE NECKLACE AND RING

necklace length: 18in.; ring size: 5 1/4

US\$1,000 - 1,500

294
A DIAMOND AND 18K GOLD 'CASMIR' WRISTWATCH, CHOPARD

quartz; dial and bracelet signed Chopard, Genève, Casmir, with Swiss marks; case no. 443180 9151; estimated total diamond weight: 2.95cts; gross weight approximately: 115 grams; diameter: 2 1/8in.

US\$4,000 - 6,000



295

296



297



298

295^Y
A CARVED CORAL, DIAMOND AND GOLD ROSE BROOCH AND EAR CLIP SET
brooch dimensions: 3 1/2 x 2in.; ear clip length: 1 1/4in.

US\$1,200 - 1,800

296
A MEXICAN GOLD COIN AND 18K GOLD BRACELET
set with thirteen 'Dos Pesos', dated 1945; gross weight approximately: 82 grams; length: 7 1/2in.

US\$2,200 - 3,200

297
A 14K GOLD AND GEM-SET CHARM BRACELET
suspending nine charms; gross weight approximately: 144 grams; length: 7in.

US\$1,500 - 2,500

PROPERTY FROM THE ESTATE OF ALICE ANNE WECKBAUGH

298
A PINK TOPAZ, DIAMOND AND GOLD BROOCH/PENDANT AND EAR CLIP SET
estimated total diamond weight: 1.80cts; gross weight approximately: 35 grams; length: 1 3/8 and 1in.

US\$1,800 - 2,500



301

299



302



303



300



304

PROPERTY OF VARIOUS OWNERS

299

A PAIR OF 18K TRI-COLOR GOLD 'TRINITY' DOORKNOCKER EARRINGS, CARTIER, 1993

signed Cartier, 1993, no. C23780; length: 2in.

US\$4,500 - 5,500

300

AN ENAMEL, DIAMOND AND BI-COLOR GOLD SNAKE RING, ROBERTO COIN, ITALIAN

with maker's and Italian marks; size: 8

US\$1,000 - 1,500

301

AN 18K TRI-COLOR GOLD 'TRINITY' BANGLE BRACELET, CARTIER

signed Cartier, no. B13580; gross weight approximately: 76 grams; diameter: 2 3/8in.

US\$5,500 - 7,000

302

AN 18K GOLD AND BLACKENED SILVER 'PANTHERE' CUFF BRACELET, CARTIER

signed Cartier, no. 262033; approximately 50 grams; diameter: 2 1/4in.

US\$5,000 - 7,000

303

A TANZANITE, DIAMOND AND 18K GOLD RING

oval-shaped tanzanite: 3.15cts; size: 5

US\$2,000 - 3,000

304

A DIAMOND AND 18K BI-COLOR GOLD FLOWER BROOCH/PENDANT, TOGETHER WITH A DIAMOND AND 14K WHITE GOLD NECKLACE

estimated total diamond weight: 4.65cts; gross weight approximately: 69 grams; necklace length: 20in.; pendant length: 2 1/2in.

US\$2,800 - 3,500

305



307



306



308



309



305

A SILVER COIN AND 14K GOLD NECKLACE

gross weight approximately: 55 grams; length: 16in.

US\$1,000 - 2,000

306

A DIAMOND AND 18K GOLD BANGLE BRACELET

estimated total diamond weigh: 2.50cts; gross weight approximately: 57 grams; diameter: 2 1/4in.

US\$2,500 - 3,500

PROPERTY FROM THE ESTATE OF ALICE ANNE WECKBAUGH

307

A DIAMOND AND 18K GOLD BANGLE BRACELET

estimated total diamond weight: 1.10cts; gross weight approximately: 36 grams; length: 6 1/2in.

US\$1,000 - 2,000

PROPERTY OF VARIOUS OWNERS

308

A SUITE OF SYNTHETIC SAPPHIRE, DIAMOND AND 18K GOLD JEWELRY

comprising a brooch, ring and pair of ear clips; brooch signed E.Pearl; estimated total diamond weight: 1.65cts; gross weight approximately: 86 grams; brooch length: 1 3/4in.; ear clip length: 1in.; ring size: 6 1/4

US\$2,000 - 3,000

PROPERTY FROM THE ESTATE OF FAITH DOMERGUE

309

A SAPPHIRE AND 18K GOLD RING, BULGARI

oval sapphire cabochon approximately 10.4 x 7.7mm; signed Bvlgari; size: 7 1/2in.

US\$2,000 - 3,000

310

311

312

314

313

315

PROPERTY FROM THE ESTATE OF ALICE ANNE WECKBAUGH

310
A DIAMOND AND 18K GOLD NECKLACE
gross weight approximately: 76 grams;
length: 17 in.

US\$2,500 - 3,500

PROPERTY OF VARIOUS OWNERS

311
A PAIR OF SAPPHIRE, DIAMOND AND 18K BI-COLOR GOLD EARRINGS AND RING

estimated total diamond weight: 4.25cts;
earring length: 7/8in.; ring size: 4

US\$1,500 - 2,500

312
A CULTURED PEARL, SAPPHIRE, DIAMOND AND GOLD BROOCH/PENDANT
estimated total diamond weight: 2.85cts;
length: 2 3/4in.

US\$1,200 - 1,500

313
A SAPPHIRE, DIAMOND, PLATINUM AND 18K GOLD CLUSTER RING
round-shaped sapphire: 1.41cts; estimated remaining sapphire weight: 2.20cts;
estimated total diamond weight: 1.50cts;
size: 6

US\$4,000 - 6,000

314
A DIAMOND, COLORED DIAMOND AND BI-COLOR GOLD PENDANT
round brilliant-cut center diamond approximately 0.90cts; length: 1in. (colored diamonds untested for origin of color)

US\$1,000 - 1,500

315
A CULTURED PEARL, DIAMOND, 18K GOLD AND PLATINUM TORSADE BRACELET
comprising eight strands of cultured pearls; estimated total diamond weight: 1.00ct; length: 8in.

US\$2,000 - 3,000



316



317



318



320



319



321

**316
A CULTURED PEARL, DIAMOND AND
14K GOLD NECKLACE AND PAIR OF
EAR CLIPS**

pearls approximately 6.8 to 5.6mm; gross weight approximately: 46 grams; necklace length: 15in.; ear clip length: 1 1/4in.

US\$1,200 - 1,800

**PROPERTY FROM THE ESTATE
OF ALICE ANNE WECKBAUGH**

**317
A DIAMOND, LAPIS LAZULI AND
18K GOLD INTEGRAL BRACELET
WRISTWATCH, BAUME & MERCIER**
dial signed Baume & Mercier, Geneve; case no. 908547 38234 989; with Swiss marks; gross weight approximately: 56 grams; length: 6 1/2in.

US\$1,800 - 2,500

PROPERTY OF ANOTHER OWNER

**318
A SAPPHIRE AND 18K BI-COLOR GOLD
CUFF BRACELET, FOPE**
signed Fope, Italy; gross weight approximately: 49 grams; diameter: 2 1/8in.

US\$2,000 - 3,000

**PROPERTY FROM THE ESTATE
OF FAITH DOMERGUE**

**319
A BAROQUE CULTURED PEARL AND
GOLD RING**
pearl approximately 13.7 x 12.5mm; size: 2 1/2

US\$1,000 - 1,500

PROPERTY OF ANOTHER OWNER

**320
A DIAMOND, CULTURED PEARL AND
BI-COLOR GOLD HEART BROOCH/
PENDANT**
dimensions: 1 1/2 x 1 1/2in.

US\$1,000 - 1,500

**321
A SAPPHIRE, DIAMOND AND 18K WHITE
GOLD RING**

oval-shaped sapphire approximately 9.42 x 8.15 x 7.45mm; size: 6 1/2

US\$5,000 - 7,000



322

323

324

325

326

327

PROPERTY FROM THE COLLECTION OF A NEW YORK LADY

322

A 14K GOLD OPEN LINK CHAIN

approximately 108 grams; length: 17in.

US\$2,000 - 3,000

PROPERTY OF VARIOUS OWNERS

323

A BLUE TOPAZ, DIAMOND AND 18K GOLD RING

oval-shaped topaz approximately 13.10 x 10.00 x 8.05mm; size: 8

US\$800 - 1,200

324

A PAIR OF JADEITE JADE, DIAMOND AND GOLD EARRINGS

jadeite jade cabochons diameter approximately 13mm; *estimated total diamond weight: 1.60cts; length: 1in.*

US\$2,000 - 3,000

325

A DIAMOND AND 14K GOLD NECKLACE

estimated total diamond weight: 1.30cts; length: 17in.

US\$1,200 - 1,800

326

A TANZANITE, DIAMOND AND 18K GOLD PENDANT

oval-shaped tanzanite approximately 14.7 x 11.7 x 8.2mm; *length: 2 3/4in.*

US\$1,200 - 1,800

327

A PAIR OF EMERALD, SAPPHIRE, DIAMOND AND GOLD DAY/NIGHT EARRINGS

estimated total diamond weight: 1.15cts; length: 1 5/8 to 5/8in.

US\$5,500 - 7,000



328



331



330



329



332



333

328
A GEM-SET, JADEITE JADE, DYED BLUE CHALCEDONY AND 18K GOLD BEAD NECKLACE, MANFREDI

beads approximately 8.9 to 5.5mm; clasp set with semi-precious stones including aquamarine, tourmaline and tanzanite; *signed Manfredi*; length: 15 3/4in.

US\$2,000 - 3,000

329
A GEM-SET AND 18K GOLD PARROT BROOCH, JEAN VITAU

including sapphire, ruby, tsavorite garnet and emerald; *signed Jean Vitau*; length: 1 1/4in.

US\$1,500 - 2,500

330
A PAIR OF JADEITE JADE AND GOLD EAR PENDANTS

length: 1 3/4in.

US\$1,000 - 1,500

331
A DIAMOND AND 14K GOLD RING

square modified brilliant-cut diamond approximately 1.30cts; size: 7

US\$3,000 - 5,000

332
A JADEITE JADE AND 18K GOLD RING

oval jadeite jade cabochon approximately 20.57 x 14.86 x 8.73mm; size: 7

US\$4,000 - 6,000

GIA report #2171341879, dated October 16, 2015, stating: natural color, no indications of impregnation.

333
A PAIR OF DIAMOND AND BI-COLOR GOLD LEAF EARRINGS

estimated total diamond weight: 2.00cts; length: 1in.

US\$1,000 - 2,000



334



335



336

334
AN EMERALD BEAD, DIAMOND AND 18K WHITE GOLD MULTI-STRAND NECKLACE AND BRACELET SET
estimated total diamond weight: 1.45 carats; length: 16 and 6 1/2in.
 US\$1,500 - 2,000

335
A DIAMOND AND 18K WHITE GOLD SWAG RING
estimated total diamond weight: 2.90cts; size: 7
 US\$2,000 - 3,000

336
A PAIR OF DIAMOND AND PLATINUM SOLITAIRE EARRINGS WITH DETACHABLE PENDANTS
estimated total diamond weight: 4.25cts; length: 1 1/8in.
 US\$5,000 - 7,000

337
A CARVED JADEITE JADE, DIAMOND AND 18K WHITE GOLD RING
carved and pierced oval jadeite jade plaque approximately 22.4 x 12.0mm; with English hallmarks; size: 8
 US\$1,000 - 1,500

338
A DIAMOND AND 18K WHITE GOLD SPRAY BROOCH
estimated total diamond weight: 8.50cts; length: 2 5/8in.
 US\$6,000 - 9,000

339
A CULTURED PEARL, CARVED JADE AND 14K WHITE GOLD NECKLACE
pearls approximately: 8.0 to 7.4mm; length: 21in.
 US\$1,200 - 1,800

340
A COLORED DIAMOND, DIAMOND AND 18K BI-COLOR GOLD RING
cushion-shaped center diamond approximately 1.50cts; estimated remaining diamond weight: 1.50cts; size: 6 1/4 (colored diamond untested for origin of color)
 US\$3,000 - 5,000

PROPERTY OF A LADY

341
AN EMERALD, DIAMOND AND PLATINUM RING
estimated total diamond weight: 1.00ct; size: 5 1/2

US\$1,500 - 2,500

PROPERTY OF VARIOUS OWNERS

342
A PAIR OF DIAMOND AND 18K WHITE GOLD PENDANT EARRINGS, TIFFANY & CO.
signed Tiffany & Co.; estimated total diamond weight: 3.30cts; length: 2 1/4in.

US\$2,500 - 3,500



337



338



339



340



341



342



343

**343
A PAIR OF RUBY, DIAMOND AND 18K
GOLD EARRINGS**

pear-shaped ruby cabochons: 2.06 and 1.83cts; length: 1 3/8in.

US\$3,500 - 4,500

AGL report #CS1073461, dated February 18, 2016, stating: no heat enhancement.

**344
AN 18K WHITE GOLD INTEGRAL
BRACELET WRISTWATCH, PIAGET**

dial signed Piaget; case no. 9131 A6 147906; with Swiss marks; gross weight approximately: 77 grams; length: 7 1/2in.

US\$2,500 - 3,500

346

**346
A DIAMOND AND 14K WHITE GOLD
BRACELET**

estimated total diamond weight: 7.00cts; gross weight approximately: 31 grams

US\$2,800 - 3,500

**345
A DIAMOND AND 18K WHITE GOLD 'C
DE CARTIER' BAND, CARTIER**

signed Cartier, no. 917495; size: 5

US\$1,800 - 2,500

347

**347
A PAIR OF MORGANITE, WHITE
SAPPHIRE AND WHITE GOLD EAR
CLIPS**

pear-shaped morganite approximately 13.90 x 10.90 x 7.40mm; length: 1in.

US\$2,800 - 3,500

**348
A DIAMOND AND PLATINUM RING,
TOGETHER WITH A PAIR OF DIAMOND
AND 18K WHITE GOLD BANDS**

square modified brilliant-cut center diamond approximately 4.50cts; estimated remaining diamond weight: 3.00cts; size: 7 and 6 1/2

US\$20,000 - 30,000



349



350



352



351



353

349
**AN AMETHYST, GEM-SET, DIAMOND
AND 18K WHITE GOLD RING**

*estimated total diamond weight: 1.20cts;
size: 7*

US\$1,200 - 1,800

350
**A DIAMOND, RUBY AND 18K WHITE
GOLD HEART MOTIF BAND**

size: 6 3/4

US\$1,000 - 2,000

351
**A PAIR OF DIAMOND AND 18K WHITE
GOLD EARRINGS**

*estimated total diamond weight: 3.50cts;
length: 1 3/4in.*

US\$2,000 - 3,000

352
**A DIAMOND, RUBY, ONYX AND 18K
WHITE GOLD PARROT BANGLE
BRACELET**

*estimated total diamond weight: 9.00cts;
gross weight approximately: 57 grams;
diameter: 2 3/8in.*

US\$4,000 - 6,000

353
**A RUBY, DIAMOND AND 18K WHITE
GOLD HEART PENDANT, TOGETHER
WITH A DIAMOND AND 14K WHITE
GOLD CHAIN**

*gross weight approximately: 25 grams; chain
length: 17in.; pendant length: 1 1/2in.*

US\$1,500 - 2,500



354

**354
A DIAMOND AND 18K WHITE GOLD
BRACELET**

*estimated total diamond weight: 5.65cts;
gross weight approximately: 101 grams;
length: 7in.*

US\$3,000 - 5,000

**355
A GREEN BERYL, DIAMOND AND 18K
WHITE GOLD BRACELET**

length: 7in.

US\$3,000 - 5,000

356

**356
A PAIR OF DIAMOND AND 14K WHITE
GOLD HOOP EARRINGS**

*estimated total diamond weight: 4.30cts;
length: 1 3/8in.*

US\$1,500 - 2,000

**357
A TOURMALINE, DIAMOND AND WHITE
GOLD RING**

*rectangular step-cut tourmaline
approximately 18.27 x 12.95 x 10.20mm;
size: 8 1/2*

US\$1,200 - 1,800

357

**358
A DIAMOND AND PLATINUM ETERNITY
BAND**

*estimated total diamond weight: 3.80cts;
size: 6 1/2*

US\$2,500 - 3,500

**359
A CAT'S EYE CHRYSOBERYL, DIAMOND
AND PALLADIUM RING**

*oval cat's eye chrysoberyl cabochon
approximately 10.7 x 8.6mm; size: 5*

US\$3,000 - 5,000



360



361



362



363



364



365

**360
A DIAMOND AND WHITE GOLD DOME RING**

*estimated total diamond weight: 2.50cts;
size: 6*

US\$800 - 1,000

**361
A PAIR OF CARVED CHALCEDONY,
SAPPHIRE, DIAMOND AND 18K WHITE
GOLD FLOWER EARRINGS**

length: 1 3/8in.

US\$1,000 - 1,200

**362
A STAR SAPPHIRE, DIAMOND AND
WHITE GOLD RING**

*oval star sapphire cabochon: 17.77cts; size:
7 1/4*

US\$3,000 - 5,000

GIA report #2135801797, dated September 13, 2011, stating: Sri Lanka origin, no indications of heat treatment.

**363
A DIAMOND AND PLATINUM BAND**

*estimated total diamond weight: 0.90ct; size:
6*

US\$1,000 - 1,500

**364
A DIAMOND AND 18K WHITE GOLD
RIVIÈRE NECKLACE**

*estimated total diamond weight: 21.00cts;
gross weight approximately: 33 grams;
length: 17in.*

US\$10,000 - 15,000

**365
A SAPPHIRE, DIAMOND AND 18K WHITE
GOLD PENDANT WITH CHAIN**

*oval-shaped sapphire: 12.52cts; length: 1
1/2in.*

US\$7,000 - 9,000

GIA report #1156168564, dated December 19, 2012, stating: Sri Lanka origin, no indications of heating.



367

368

369

370

366

**366
A PAIR OF FRESHWATER CULTURED PEARL, DIAMOND AND PLATINUM DAY/NIGHT EARRINGS**

baroque pearls approximately 18.1 x 13.3 and 17.2 x 14.4mm; *estimated total diamond weight: 4.00cts; length: 1 3/4in.*

US\$2,000 - 3,000

**367
A DIAMOND AND WHITE GOLD BRACELET**

estimated total diamond weight: 5.70cts; gross weight approximately: 31 grams; length: 7 1/4in.

US\$1,500 - 2,500

PROPERTY FROM THE ESTATE OF ALICE ANNE WECKBAUGH

**368
A DIAMOND AND 18K WHITE GOLD INTEGRAL BRACELET WRISTWATCH, CORUM**

dial and clasp signed Corum; estimated total diamond weight: 1.00ct; gross weight approximately: 50 grams; length: 6in.

US\$1,500 - 2,500

PROPERTY OF VARIOUS OWNERS

**369
A DIAMOND AND PLATINUM LINE BRACELET**

estimated total diamond weight: 5.00cts; length: 7in.

US\$3,000 - 5,000

**370
AN OPAL, DIAMOND AND 18K WHITE GOLD RING**

semi-black oval opal cabochon approximately 13.0 x 10.9mm; *estimated total diamond weight: 1.25cts; size: 9*

US\$5,000 - 7,000



371



374



373
**A CULTURED PEARL, DIAMOND AND
18K WHITE GOLD RING**
pearl approximately 14.7mm; *estimated total
diamond weight: 1.00ct; size: 4*

US\$1,000 - 1,500



373

374
**A COLORED CULTURED PEARL,
DIAMOND AND 14K GOLD NECKLACE**
pearls approximately 12.9 to 11.5mm;
*estimated total diamond weight: 2.50cts;
length: 17 1/2in. (colored cultured pearls
untested for origin of color)*

US\$2,000 - 3,000



372

371
A DIAMOND AND WHITE GOLD RING
*estimated total diamond weight: 2.00cts;
size: 6 1/4*

US\$1,000 - 1,500

372
**A DIAMOND AND PLATINUM ETERNITY
BAND**
*estimated total diamond weight: 1.50cts;
size: 6*

US\$1,000 - 1,500



375

376



377



378



379

375
A DIAMOND AND PLATINUM RING
old European-cut center diamond
approximately 1.15cts; *estimated remaining
diamond weight: 1.85cts; size: 6 3/4*

US\$3,000 - 4,000

376
**A DIAMOND AND 18K WHITE GOLD
LONG CHAIN NECKLACE**
*estimated total diamond weight: 1.60cts;
length: 70in.*

US\$1,000 - 2,000

377
**A PAIR OF DIAMOND AND 18K
WHITE GOLD 'MAILLON PANTHÈRE'
EARRINGS, CARTIER**
signed Cartier, no. L08044; length: 3/4in.

US\$2,000 - 3,000

378
**A PAIR OF AQUAMARINE, DIAMOND,
COLORED DIAMOND AND WHITE GOLD
PENDANT EARRINGS**
*estimated total diamond weight: 1.00ct;
length: 2 1/2in. (colored diamonds untested
for origin of color)*

US\$2,800 - 3,500

379
**A JADEITE JADE, DIAMOND AND 14K
WHITE GOLD BYPASS RING**
size: 7

US\$1,000 - 1,500



380
A DIAMOND AND PLATINUM RING
*estimated total diamond weight: 4.35cts;
 size: 6*

US\$2,000 - 3,000

381
**A BLACK DIAMOND BEAD, DIAMOND
 AND 18K WHITE GOLD TORSADE
 NECKLACE**
*estimated total diamond weight: 94.70cts;
 length: 16 1/8 in. (colored diamonds
 untested for origin of color)*

US\$3,000 - 5,000

382
**A PAIR OF DIAMOND AND 18K WHITE
 GOLD FLOWER EARRINGS**
*estimated total diamond weight: 1.00ct;
 length: 5/8in.*

US\$1,000 - 1,200

383
**A PAIR OF DIAMOND, JADEITE JADE
 AND WHITE GOLD EAR PENDANTS**
*estimated total diamond weight: 2.15cts;
 length: 1 3/8in.*

US\$1,500 - 2,500

384
**A DIAMOND AND WHITE GOLD ROSE
 BROOCH/PENDANT**
*estimated total diamond weight: 3.00cts;
 dimensions: 1 1/8 x 1in.*

US\$1,200 - 1,800

385
**AN AQUAMARINE, DIAMOND AND
 WHITE GOLD RING**
*oval-shaped aquamarine approximately
 19.75 x 12.50 x 9.80mm; size: 9 1/2*

US\$1,000 - 1,500



386

**386
A PAIR OF COLORED CULTURED PEARL, DIAMOND, YELLOW SAPPHIRE AND 18K BI-COLOR GOLD EARRINGS**

pearls approximately 11.7mm; length: 2 1/2in. (colored cultured pearls untested for origin of color)

US\$2,000 - 3,000

PROPERTY FROM THE ESTATE OF ALICE ANNE WECKBAUGH

**387
AN OPAL, DIAMOND AND BI-COLOR GOLD RING**

estimated total diamond weight: 3.00cts; size: 6 1/2

US\$1,200 - 1,800

390

PROPERTY OF VARIOUS OWNERS

**388
A COLORED SOUTH SEA CULTURED PEARL, COLORED DIAMOND AND 18K GOLD NECKLACE**

pearls approximately 13.3 to 11.3mm; length: 15 1/2in.

US\$3,000 - 5,000

**389
A TOURMALINE, DIAMOND AND WHITE GOLD RING**

rectangular step-cut tourmaline approximately 12.30 x 9.70 x 5.60mm; estimated total diamond weight: 4.00cts; size: 7

US\$2,000 - 3,000

389

**390
A DIAMOND AND PLATINUM WEDDING RING SET, TIFFANY & CO.**

comprising a ring and eternity band; round brilliant-cut center diamond: 1.22cts; both signed Tiffany & Co., ring no. 18716178; estimated remaining diamond weight: 1.30cts; size: 8 and 6 1/2

US\$4,500 - 6,500

GLA report #6177559222, dated March 31, 2016, stating: H color, VVS2 clarity.



391



392



393



394



395



396

**391
A TOURMALINE, DIAMOND, PLATINUM
AND 18K GOLD RING**

rectangular step-cut tourmaline: 8.33cts;
estimated total diamond weight: 1.00ct; size:
6 1/2

US\$3,000 - 5,000

**392
A DIAMOND AND PLATINUM FLOWER
RING**

old European-cut center diamond
approximately 1.10cts; estimated remaining
diamond weight: 3.10cts; size: 5

US\$4,000 - 6,000

**393
A DIAMOND AND PLATINUM RING**
*transitional round brilliant-cut center diamond
approximately 2.00cts; size: 6*

US\$2,500 - 3,500

**394
A CULTURED PEARL, DIAMOND AND
18K GOLD BRACELET, CARTIER**
*pearls approximately 7.4 to 7.1mm; signed
Cartier, no. 00293; estimated total diamond
weight: 1.00ct; length: 7 1/2in.*

US\$1,500 - 2,500

**395
A CULTURED PEARL, DIAMOND AND
WHITE GOLD TASSEL PENDANT**
*estimated total diamond weight: 1.35cts;
length: 3 1/4in.*

US\$800 - 1,200

**396
A PAIR OF COLORED BAROQUE
CULTURED PEARL, DIAMOND,
COLORED DIAMOND AND BLACKENED
GOLD EARRINGS**
*pearls approximately 14.7 to 13.7mm;
length: 1 3/4in. (colored cultured pearls and
diamonds untested for origin of color)*

US\$1,200 - 1,800



397



398



399



401



400



402



397
A DIAMOND AND WHITE GOLD RING
estimated total diamond weight: 3.00cts; size: 7

US\$1,000 - 2,000

398
A RUBY, DIAMOND AND WHITE GOLD RING
round-shaped ruby: 3.66cts; estimated total diamond weight: 2.00cts; size: 5 3/4

US\$1,000 - 1,500

399
A DIAMOND AND 18K WHITE GOLD HEART-SHAPED BANGLE BRACELET, PIAGET, 1997
signed Piaget, 1997, no. A57783; diameter: 2 3/8in.

US\$1,000 - 1,500

400
A RUBY, DIAMOND AND 18K WHITE GOLD RING, TIFFANY & CO.
oval-shaped ruby approximately 7.70 x 6.70 x 3.15mm; signed Tiffany & Co.; size: 5 1/2

US\$1,000 - 1,500

401
A RUBY, DIAMOND AND WHITE METAL BROOCH
oval-shaped ruby approximately 10.40 x 8.45 x 4.25mm; estimated total diamond weight: 4.80cts; length: 2 1/2in.

US\$2,000 - 3,000

402
A PAIR OF DIAMOND, PLATINUM AND WHITE GOLD CUFFLINKS
triangular-shaped diamonds approximately 1.15 and 1.00cts; diameter: 3/4in.

US\$3,000 - 5,000



403



405



406



404



407



408

403
A DIAMOND AND 18K WHITE GOLD NECKLACE
estimated total diamond weight: 11.00cts; gross weight approximately: 36 grams; length: 18in.

US\$7,000 - 9,000

404
A DIAMOND AND 18K WHITE GOLD BIRD BROOCH
estimated total diamond weight: 2.00cts; length: 2 3/4in.

US\$1,000 - 1,500

405
A PAIR OF SAPPHIRE, DIAMOND AND 18K GOLD FLOWER EARRINGS
estimated total diamond weight: 3.40cts; length: 1 1/4in.

US\$3,000 - 5,000

406
A COLORED DIAMOND, DIAMOND AND GOLD FLOWER BROOCH
round brilliant-cut light brown diamond approximately 1.15cts; length: 1 1/4in. (colored diamond untested for origin of color)

US\$1,500 - 2,500

407
A DIAMOND AND WHITE GOLD RING
round brilliant-cut center diamond approximately 1.05cts; size: 8

US\$4,000 - 6,000

408
A PINK SAPPHIRE, DIAMOND AND PLATINUM RING
cushion-shaped pink sapphire: 3.81cts; size: 7 1/2

US\$2,800 - 3,500



409



410



413



411



412



414

409

A PAIR OF PINK SAPPHIRE, DIAMOND AND PLATINUM EARRINGS

oval-shaped pink sapphires approximately 8.1 x 6.1mm; estimated total diamond weight: 1.00ct; length: 1/2in.

US\$4,000 - 6,000

410

A PAIR OF DIAMOND AND PLATINUM CUFFLINKS

gross weight approximately: 25 grams; length: 7/8in.

US\$1,200 - 1,500

411

A DIAMOND AND 18K WHITE GOLD 'MATELASSE' FLEXIBLE RING, CHANEL, FRENCH

signed Chanel, no. 20J 02608, with French assay mark; size: 6 1/4

US\$2,000 - 3,000

412

A BLACK DIAMOND, DIAMOND AND 18K WHITE GOLD CRESCENT MOON PENDANT WITH CHAIN

estimated total diamond weight: 4.00cts; length: 19 1/2in. (colored diamonds untested for origin of color)

US\$1,200 - 1,800

413

A COLORED DIAMOND, DIAMOND AND 18K BI-COLOR GOLD RING

estimated total diamond weight: 1.00ct; size: 5 3/4 (colored diamonds untested for origin of color)

US\$1,000 - 2,000

414

A DIAMOND AND PLATINUM 'RIBBON' RING AND HALF ETERNITY BAND, TIFFANY & CO.

both signed Tiffany & Co., band no. K3570; estimated total diamond weight: 1.25cts; size: 6

US\$3,000 - 5,000



415

415
A DIAMOND AND GOLD FLOWER PENDANT

round brilliant-cut center diamond approximately 1.00ct; length: 7/8in.

US\$2,500 - 3,500

416
A RUBY, DIAMOND AND 14K WHITE GOLD RING

oval ruby cabochon: 12.88cts; estimated total diamond weight: 1.25cts; size: 7

US\$1,000 - 1,500

GIA report #1132442547, dated May 27, 2011, stating: East Africa origin, indications of heating and moderate clarity enhancement using a glass filler in fissures.



417

417
A DIAMOND AND PLATINUM RING

round brilliant-cut center diamond approximately 1.55cts; estimated remaining diamond weight: 1.25cts; size: 8 3/4

US\$4,000 - 6,000

418
A PAIR OF SAPPHIRE, DIAMOND AND 18K WHITE GOLD CUFFLINKS

oval-shaped sapphire approximately 10.6 x 8.2 and 10.3 x 8.7mm; dimensions: 3/4 x 9/16in.

US\$1,800 - 2,500



418



419

419
A DIAMOND AND PLATINUM FLOWER BROOCH

estimated total diamond weight: 8.00cts; length: 2 1/8in.

US\$4,000 - 6,000

420
A SAPPHIRE, DIAMOND AND 18K WHITE GOLD RING

cushion-shaped sapphire approximately 7.35 x 6.65 x 5.00mm; estimated total diamond weight: 1.00ct; size: 5

US\$2,500 - 3,500

END OF SALE

DIAMOND GRADING

COLOR

GIA	CIBJO	UK TRADITIONAL
D	Exceptional White +	Finest White
E	Exceptional White	Finest White
F	Rare White +	Fine White
G	Rare White	Fine White
H	White	White
I	Slightly Tinted White	Commercial White
J	Slightly Tinted White	Top Silver Cape
K	Tinted White	Top Silver Cape
L	Tinted White	Silver Cape
M TO N	Tinted Color	Light Cape
O TO R	Tinted Color	Cape
R TO Z	Tinted Color	Dark Cape

CLARITY

IF	Internally Flawless	No inclusions and only insignificant surface blemishes when viewed under 10X magnification
VVS1 - VVS2	Very Very Slightly Included	Minute inclusions that are incredibly difficult to see under 10X magnification, generally only visible from the back of the stone and may be removed easily by repolishing
VS1 - VS2	Very Slightly Included	Minor inclusions that range from difficult (VS1) to slightly easier (VS2) to see under 10X magnification
SI1 - 2	Slightly Included	Noticeable inclusions that are easy (SI1) or very easy (SI2) to see under 10X magnification
I1 - 3	Obvious Inclusions	Obvious inclusions that are easily visible under 10X magnification and in some cases may even be seen without magnification

RING SIZES

ENGLISH	METRIC	AMERICAN	FRENCH/JAPANESE
A	37.8252	½	-
A½	38.4237	¾	-
B	39.0222	1	-
B½	39.6207	1¼	-
C	40.2192	1½	-
C½	40.8177	1¾	-
D	41.4162	2	1
D½	42.0147	2¼	2
E	42.6132	2½	-
E½	43.2117	2¾	3
F	43.8102	3	4
F½	44.4087	3¼	-
G	45.0072	3½	5
G½	45.6057	3¾	-
H	46.2042	4	6
H½	46.8027	4¼	-
I	47.4012	4½	7
I½	47.9997	4¾	8
J	48.5982	5	-
J½	49.1967	5¼	9
K	49.7952	5½	10
K½	50.3937	5¾	-
L	50.9922	6	11
L½	51.5907	6¼	-
M	52.1892	6½	12
M½	52.7877	6¾	13
N	53.4660	7	-
N½	54.1044	7¼	14
O	54.7428	7½	15
O½	55.3812	7¾	-
P	56.0196	8	16
P½	56.6580	8¼	-
Q	57.2964	8½	17
Q½	57.9348	8¾	18
R	58.5732	9	-
R½	59.2116	9¼	19
S	59.8500	9½	20
S½	60.4884	9¾	-
T	61.1268	10	21
T½	61.7652	10¼	22
U	62.4026	10½	-
U½	63.0420	10¾	23
V	63.6804	11	24
V½	64.3188	11¼	-
W	64.8774	11½	25
W½	65.4759	11¾	-
X	66.0744	12	26
X½	66.6729	12¼	-
Y	67.2714	12½	-
Y½	67.8699	12¾	-
Z	68.4684	13	-

DIAMONDS, COLORED STONES & PEARLS

The Jewelry department of Bonhams & Butterfields recognizes that there are many various forms of treatments and enhancements used in diamonds and colored stones in order to improve their appearance and or color. Techniques such as heat treatment have been used to improve the color and transparency of both sapphires and rubies in addition to other gemstones. Techniques such as oiling have been used to enhance the clarity of emeralds while dying has been used to effect the color of jade. Techniques such as heat treatment, oiling, resin impregnation, irradiation, color diffusion, dying, fracture filling, and HTHP are just a few off the techniques that are in use today. Prospective buyers are therefore reminded that unless otherwise noted in our catalog description it must be assumed that some form of enhancement may have been used and that such treatment may not always be permanent or detectable and that our estimates have taken such possibilities into account. As a matter of policy, Bonhams & Butterfields endeavors to obtain certificates from recognized gemological laboratories when such certificates are deemed crucial to the authenticity of a gemstone. It is not possible however to gain certificates for all items offered for sale and it is therefore recommended where there is no mention of a certificate that all prospective buyers consult with one of our department specialists prior to purchase of such items.

PLEASE NOTE: A number of laboratories issue certificates that give more detailed descriptions of gemstones, however there may not be consensus between different laboratories on the degrees, or types of treatment for any particular gemstone. Neither is there necessarily consensus between different laboratories, or private appraisers, on the grading of diamonds. All gemstone weights are approximations only and although an independent laboratory grading may be used in the catalog text, we cannot guarantee such gradings.

Images shown may appear smaller or larger than actual size.

Although we endeavor to mention in our descriptions significant defects, needed repairs, absent stones and the like, **WE DO NOT GUARANTEE THAT THE DESCRIPTIONS ARE COMPREHENSIVE.** Please examine all lots carefully. It is the responsibility of the prospective bidder, or his agent, to determine the condition of lots during the preview. Condition reports have been created for most lots in this auction, and are available upon request. Please contact the Jewelry department at least two days prior to the sale date for additional information.

NOTICE REGARDING BURMESE JADEITE AND RUBIES

Current law dictates that jadeite and rubies of Burmese origin and any articles of jewelry containing jadeite or rubies of Burmese origin may not be imported into the U.S. Certification that such jadeite or rubies were not mined in or extracted from Burma is required for importation of them into the U.S.

It is the responsibility of the buyer to investigate any applicable restrictions on purchased property and to obtain any export or import licenses and/or certificates as well as any other required documentation before shipping. The buyer's inability to export or import any such items or to do so timely shall not serve as the basis for any cancellation or rescission of the sale or any delay in payment. Prospective buyers who are uncertain as to whether a lot is subject to these restrictions or any other restrictions on importation or exportation are advised to consult with the specialist department in which the property is offered.

REGULATED SPECIES MATERIALS AND CITES PERMITS

The export of a lot from the United States or import into certain countries may be subject to export or import regulations, licensure and/or other restrictions; in particular, lots containing plant or animal materials such as ivory, rhinoceros horn, tortoiseshell, coral, whalebone or certain types of woods, irrespective of age or value, may require the granting of one or more export or import licenses or certificates, or may be banned from import altogether by some countries. Moreover, the ability to obtain an export license or certificate does not insure the ability to obtain an import license or certificate in another country. Lots that contain such regulated species materials may also not be eligible for exportation or for re-importation into the United States if they are not at least 100 years of age, and, under current law, lots containing African Elephant Ivory may no longer be re-imported into the United States regardless of age. In addition, resales of lots containing certain regulated species materials may be subject to restrictions in some jurisdictions.

Lots noted in the catalog with a **Y** next to the lot number contain one or more such regulated plant or animal materials. **It is the buyer's responsibility to investigate any such restrictions and to obtain any relevant export or import licenses. Please note that this process is governed by local authorities and may take considerable time. Regardless of any delay in the obtaining of an export or import license or certificate or denial of a license's or certificate's issuance, purchased lots shall be paid for in accordance with the Conditions of Sale, and any such delay or denial shall not serve as the basis for cancellation of any sale.** Prospective buyers are advised to obtain information from the relevant regulatory authorities regarding export and import restrictions, requirements, and costs prior to bidding.

Prospective buyers should also check with their local (e.g. state) regulatory authorities regarding any local restrictions and/or permit requirements that may apply with respect to purchases of regulated species materials, including without limitation purchases of items containing elephant ivory or rhino horn. For example, we are advised that New York buyers of any lot containing elephant or mammoth ivory or rhino horn will be responsible for obtaining a New York State permit before taking possession of the lot within New York State, and that the State of New Jersey has banned the import of items containing elephant or marine mammal ivory or rhino horn into that state.

Upon request, Bonhams can refer the purchaser to a third party agent to assist the purchaser in attempting to obtain the appropriate licenses and/or certificates. However, there is no assurance that any necessary licenses or certificates can be obtained. Please contact the Specialist Department for a suggested list of shipping agents prior to placing a bid if you are uncertain as to whether a lot is subject to export/import license or certificate requirements or related restrictions.

WATCHES

Except as expressly set forth in the Conditions of Sale, all watches are sold "as is." Please examine all watches carefully. It is the responsibility of the prospective bidder or the bidder's agent to determine the condition of watches during the preview.

Although we endeavor to mention in our descriptions significant defects, needed repairs, absent stones and the like, **WE DO NOT GUARANTEE THAT THE DESCRIPTIONS ARE COMPREHENSIVE.** We do not warrant any watch to be in good working order or warrant the accuracy of any watch function such as timekeeping, chronograph, calendar, repeating or register. Any repairs that might be required are the responsibility of the purchaser.

Condition reports, which contain more information than the catalog descriptions, are available upon request. These reports are statements of opinion based on visual inspection and may not include all defects or replacements or those that would be revealed by disassembly of the watch. To ensure timely receipt of the report, please email your request at least two days prior to the sale date. Condition reports may also be viewed at the watch counter during previews.

Please note that Bonhams does not warrant that any component watch part is original or that watch cases have not been altered or replaced, as virtually all pre-owned watches may have been previously repaired and could include replacement parts. A manufacturer's certificate of authenticity is not available

IMPORTANT NAMES & NOTICES (CONTINUED)

unless described in the catalog description of a lot, and a manufacturer's refusal to service or repair a timepiece due to the presence of replacement parts shall not constitute grounds to rescind a sale.

Case screw-backs have been loosened for examination and viewing by Bonhams, and should be resealed by purchasers for water resistance.

The dimensions given refer to the diameter of circular watch cases, excluding the lugs (in the case of a wristwatch) or the pendant (in the case of a pocket watch). For watches of other shapes, the corresponding width is given.

THE FOLLOWING IS AN EXPLANATION OF THE CONDITION STATEMENTS USED.

- 1. EXCELLENT:** Case with sharp edge detail and possibly with a slight trace of wear; may have minor light surface scratches; case back opening grooves (if any) with sharp detail. Dial with original finish (unless stated) and without toning; the applied indexes (if any) and hands in mint condition. Winding and setting functions were operative at the time of cataloguing (unless otherwise stated) but may need service subsequently. Movement may need service.
- 2. VERY GOOD:** Case edge detail possibly rounded by light wear or polish; may have light surface scratches and small dents; case back opening grooves (if any) possibly with some light burring. Dial possibly with light toning; the applied indexes (if any) and hands in very good condition (unless stated). Movement possibly with a few minor tool marks. Winding and setting functions were operative at the time of cataloguing (unless otherwise stated) but may need service subsequently. Movement may need service.
- 3. GOOD:** Case possibly with rounded edge detail; may have numerous light to medium surface scratches and some dents; case back opening grooves (if any) possibly with some medium burring. Dial possibly with medium toning (unless stated); the applied indexes (if any) and hands may have light surface scratches and toning. Movements possibly with numerous tool marks. Winding and setting functions were operative at the time of cataloguing (unless otherwise stated) but may need service subsequently. Movement may need service.

INCLUDING PROPERTY FROM

A Beverly Hills Lady
 The Collection of a New York Lady
 The Estate of Ruth Rodormer Robinson
 The Collection of a Washington, DC Socialite
 The Estate of Faith Domergue
 A Lady
 The Estate of Alan J. Broder, New York
 The Estate of Alice Anne Weckbaugh

NAME	LOT NUMBER
Alfred Karram	189
Asch Grossbardt	191, 192, 194
Baume & Mercier	287, 317
Bibigi	164
Boucheron.....	36, 247
Bulgari.....	8, 12, 143, 163, 166, 168, 217, 309
Cartier	203, 224, 259, 271, 299, 301, 302, 346, 377, 394
Chanel.....	411
Chaumet	161, 209
Chopard	138, 139, 234, 246, 294
Corum.....	368
David Yurman	109
Elizabeth Gage	11, 50
Elizabeth Locke	48
Fope.....	318
Frank Gehry.....	123
Hamilton.....	81, 93
Helen Woodhull	47
Jaeger-LeCoultre.....	292
Jean Vitau	215, 329
Jean-François Albert.....	187
José Hess	147
Kieselstein-Cord	10
Kutchinsky.....	262
London.....	13
Lucien Piccard.....	104
Manfredi	328
Marsh & Co.	68
McTeigue.....	87
Merry Renk.....	198
Paloma Picasso.....	146
Pampillonia.....	149
Piaget.....	219, 344, 399
Robert Lee Morris.....	197
Roberto Coin.....	300
Seaman Schepps	136, 156
Tagliamonte, Italy	51
Tiffany & Co.....	29, 120, 123, 146, 184, 204, 227, 239, 254, 390, 400, 414
Vahe Naltchayan.....	205
Van Cleef & Arpels	110, 130, 131, 152, 178, 226
Verdura.....	183
Wander.....	182

CONDITIONS OF SALE

The following Conditions of Sale, as amended by any published or posted notices or verbal announcements during the sale, constitute the entire terms and conditions on which property listed in the catalog shall be offered for sale or sold by Bonhams & Butterfields Auctioneers Corp. and any consignor of such property for whom we act as agent. If live online bidding is available for the subject auction, additional terms and conditions of sale relating to online bidding will apply; see www.bonhams.com/WebTerms for the supplemental terms. As used herein, "Bonhams," "we" and "us" refer to Bonhams & Butterfields Auctioneers Corp.

1. As used herein, the term "bid price" means the price at which a lot is successfully knocked down to the purchaser. The term "purchase price" means the aggregate of (a) the bid price, (b) a PREMIUM retained by us and payable by the purchaser EQUAL TO 25% OF THE FIRST \$100,000 OF THE BID PRICE, 20% OF THE AMOUNT OF THE BID PRICE ABOVE \$100,000 UP TO AND INCLUDING \$2,000,000, AND 12% OF THE AMOUNT OF THE BID PRICE OVER \$2,000,000, and (c) unless the purchaser is exempt by law from the payment thereof, any California, Arizona, Colorado, Connecticut, Florida, Georgia, Illinois, Massachusetts, Nevada, New York, Pennsylvania, Texas, Washington, D.C., Washington state, or other state or local sales tax (or compensating use tax) and other applicable taxes.

2. On the fall of the auctioneer's hammer, the highest bidder shall have purchased the offered lot in accordance and subject to compliance with all of the conditions set forth herein and (a) assumes full risk and responsibility therefor, (b) if requested will sign a confirmation of purchase, and (c) will pay the purchase price in full or such part as we may require for all lots purchased. No lot may be transferred. Any person placing a bid as agent on behalf of another (whether or not such person has disclosed that fact or the identity of the principal) may be jointly and severally liable with the principal under any contract resulting from the acceptance of a bid.

Unless otherwise agreed, payment in good funds is due and payable within five (5) business days following the auction sale. Whenever the purchaser pays only a part of the total purchase price for one or more lots purchased, we may apply such payments, in our sole discretion, to the lot or lots we choose. Payment will not be deemed made in full until we have collected good funds for all amounts due.

Payment for purchases may be made in or by (a) cash, (b) cashier's check or money order, (c) personal check with approved credit drawn on a U.S. bank, (d) wire transfer or other immediate bank transfer, or (e) Visa, MasterCard, American Express or Discover credit, charge or debit card. A processing fee will be assessed on any returned checks. Please note that the amount of cash notes and cash equivalents that can be accepted from a given purchaser may be limited.

The purchaser grants us a security interest in the property, and we may retain as collateral security for the purchaser's obligations to us, any property and all monies held or received by us for the account of the purchaser, in our possession. We retain all rights of a secured party under the California Commercial Code. If the foregoing conditions or any other applicable conditions herein are not complied with, in addition to other remedies available to us and the consignor by law, including without limitation, the right to hold the purchaser liable for the purchase price, we at our option may either (a) cancel the sale, retaining as liquidated damages all payments made by the purchaser or (b) resell the property, either publicly or privately, and in such

event the purchaser shall be liable for the payment of any deficiency plus all costs and expenses of both sales, our commission at our standard rates, all other charges due hereunder, attorneys' fees, expenses and incidental damages. In addition, where two or more amounts are owed in respect of different transactions by the purchaser to us, to Bonhams 1793 Limited and/or to any of our other affiliates, subsidiaries or parent companies worldwide within the Bonhams Group, we reserve the right to apply any monies paid in respect of a transaction to discharge any amount owed by the purchaser. If all fees, commissions, premiums, bid price and other sums due to us from the purchaser are not paid promptly as provided in these Conditions of Sale, we reserve the right to impose a finance charge equal to 1.5% per month on all amounts due to us beginning on the 31st day following the sale until payment is received, in addition to other remedies available to us by law.

3. We reserve the right to withdraw any property and to divide and combine lots at any time before such property's auction. Unless otherwise announced by the auctioneer at the time of sale, all bids are per lot as numbered in the catalog and no lots shall be divided or combined for sale.

4. We reserve the right to reject a bid from any bidder, to split any bidding increment, and to advance the bidding in any manner the auctioneer may decide. In the event of any dispute between bidders, or in the event the auctioneer doubts the validity of any bid, the auctioneer shall have sole and final discretion either to determine the successful bidder or to re-offer and resell the article in dispute. If any dispute arises after the sale, our sales records shall be conclusive in all respects.

5. If we are prevented by fire, theft or any other reason whatsoever from delivering any property to the purchaser or a sale otherwise cannot be completed, our liability shall be limited to the sum actually paid therefor by the purchaser and shall in no event include any compensatory, incidental or consequential damages.

6. If a lot is offered subject to a reserve, we may implement such reserve by bidding on behalf of the consignor, whether by opening bidding or continuing bidding in response to other bidders until reaching the reserve. If we have an interest in an offered lot and the proceeds therefrom other than our commissions, we may bid therefor to protect such interest. **CONSIGNORS ARE NOT ALLOWED TO BID ON THEIR OWN ITEMS.**

7. All statements contained in the catalog or in any bill of sale, condition report, invoice or elsewhere as to authorship, period, culture, source, origin, measurement, quality, rarity, provenance, importance, exhibition and literature of historical relevance, or physical condition **ARE QUALIFIED STATEMENTS OF OPINION AND NOT REPRESENTATIONS OR WARRANTIES.** No employee or agent of Bonhams is authorized to make on our behalf or on that of the consignor any representation or warranty, oral or written, with respect to any property.

8. All purchased property shall be removed from the premises at which the sale is conducted by the date(s) and time(s) set forth in the "Buyer's Guide" portion of this catalog. Property designated with a "W" and associated purchased lots, if not removed promptly following sale, will be transferred to an offsite warehouse at the purchaser's risk and expense, as set forth in more detail in the "Buyer's Guide." Purchased property that is permitted to remain onsite at Bonhams' facility should be removed at the purchaser's expense not later than 5:00 p.m. Pacific Time five (5) business days following the date of the sale. If not so removed, a storage fee of \$5.00 per lot per day will

be payable to us by the purchaser beginning at the close of the 21st day following the sale, and we may thereafter transfer such property to an offsite warehouse at the purchaser's risk and expense. Accounts must be settled in full before property will be released. Packing and handling of purchased lots are the responsibility of the purchaser. Bonhams can provide packing and shipping services for certain items as noted in the "Buyer's Guide" section of the catalog.

9. The copyright in the text of the catalog and the photographs, digital images and illustrations of lots in the catalog belong to Bonhams or its licensors. You will not reproduce or permit anyone else to reproduce such text, photographs, digital images or illustrations without our prior written consent.

10. These Conditions of Sale shall bind the successors and assigns of all bidders and purchasers and inure to the benefit of our successors and assigns. No waiver, amendment or modification of the terms hereof (other than posted notices or oral announcements during the sale) shall bind us unless specifically stated in writing and signed by us. If any part of these Conditions of Sale is for any reason invalid or unenforceable, the rest shall remain valid and enforceable.

11. These Conditions of Sale and the purchaser's and our respective rights and obligations hereunder are governed by the laws of the State of California. By bidding at an auction, each purchaser and bidder agrees to be bound by these Conditions of Sale. Any dispute, controversy or claim arising out of or relating to this agreement, or the breach, termination or validity thereof, brought by or against Bonhams (but not including claims brought against the consignor by the purchaser of lots consigned hereunder) shall be resolved by the procedures set forth below.

MEDIATION AND ARBITRATION PROCEDURES

(a) Within 30 days of written notice that there is a dispute, the parties or their authorized and empowered representatives shall meet by telephone and/or in person to mediate their differences. If the parties agree, a mutually acceptable mediator shall be selected and the parties will equally share such mediator's fees. The mediator shall be a retired judge or an attorney familiar with commercial law and trained in or qualified by experience in handling mediations. Any communications made during the mediation process shall not be admissible in any subsequent arbitration, mediation or judicial proceeding. All proceedings and any resolutions thereof shall be confidential, and the terms governing arbitration set forth in paragraph (c) below shall govern.

(b) If mediation does not resolve all disputes between the parties, or in any event no longer than 60 days after receipt of the written notice of dispute referred to above, the parties shall submit the dispute for binding arbitration before a single neutral arbitrator. Such arbitrator shall be a retired judge or an attorney familiar with commercial law and trained in or qualified by experience in handling arbitrations. Such arbitrator shall make all appropriate disclosures required by law. The arbitrator shall be drawn from a panel of a national arbitration service agreed to by the parties, and shall be selected as follows: (i) If the national arbitration service has specific rules or procedures, those rules or procedures shall be followed; (ii) If the national arbitration service does not have rules or procedures for the selection of an arbitrator, the arbitrator shall be an individual jointly agreed to by the parties. If the parties cannot agree on a national arbitration service, the arbitration shall be conducted by the American Arbitration Association, and the arbitrator

CONDITIONS OF SALE - CONTINUED

shall be selected in accordance with the Rules of the American Arbitration Association. The arbitrator's award shall be in writing and shall set forth findings of fact and legal conclusions.

(c) Unless otherwise agreed to by the parties or provided by the published rules of the national arbitration service:

(i) the arbitration shall occur within 60 days following the selection of the arbitrator;

(ii) the arbitration shall be conducted in the designated location, as follows: (A) in any case in which the subject auction by Bonhams took place or was scheduled to take place in the State of New York or Connecticut or the Commonwealth of Massachusetts, the arbitration shall take place in New York City, New York; (B) in all other cases, the arbitration shall take place in the city of San Francisco, California; and

(iii) discovery and the procedure for the arbitration shall be as follows:

(A) All arbitration proceedings shall be confidential;

(B) The parties shall submit written briefs to the arbitrator no later than 15 days before the arbitration commences;

(C) Discovery, if any, shall be limited as follows: (I) Requests for no more than 10 categories of documents, to be provided to the requesting party within 14 days of written request therefor; (II) No more than two (2) depositions per party, provided however, the deposition(s) are to be completed within one (1) day; (III) Compliance with the above shall be enforced by the arbitrator in accordance with California law;

(D) Each party shall have no longer than eight (8) hours to present its position. The entire hearing before the arbitrator shall not take longer than three (3) consecutive days;

(E) The award shall be made in writing no more than 30 days following the end of the proceeding. Judgment upon the award rendered by the arbitrator may be entered by any court having jurisdiction thereof.

To the fullest extent permitted by law, and except as required by applicable arbitration rules, each party shall bear its own attorneys' fees and costs in connection with the proceedings and shall share equally the fees and expenses of the arbitrator.

LIMITED RIGHT OF RESCISSION

If within one (1) year from the date of sale, the original purchaser (a) gives written notice to us alleging that the identification of Authorship (as defined below) of such lot as set forth in the **BOLD TYPE** heading of the catalog description of such lot (as amended by any saleroom notices or verbal announcements during the sale) is not substantially correct based on a fair reading of the catalog (including the terms of any glossary contained therein), and (b) within 10 days after such notice returns the lot to us in the same condition as at the time of sale, and (c) establishes the allegation in the notice to our satisfaction (including by providing one or more written opinions by recognized experts in the field, as we may reasonably require), then the sale of such lot will be rescinded and, unless we have already paid to the consignor monies owed him in connection with the sale, the original purchase price will be refunded.

If, prior to receiving such notice from the original purchaser alleging such defect, we have paid the consignor monies owed him in connection with the sale, we shall pay the original purchaser the amount of our commissions, any other sale proceeds to which we are entitled and applicable taxes received from the purchaser on the sale and make demand on the consignor to pay the balance of the original purchase price to the original purchaser. Should the consignor fail to pay such amount promptly, we may disclose the identity of the consignor and assign to the original purchaser our rights against the consignor with respect to the lot the sale of which is sought to be rescinded. Upon such disclosure and assignment, any liability of Bonhams as consignor's agent with respect to said lot shall automatically terminate.

The foregoing limited right of rescission is available to the original purchaser only and may not be assigned to or relied upon by any subsequent transferee of the property sold. The purchaser hereby accepts the benefit of the consignor's warranty of title and other representations and warranties made by the consignor for the purchaser's benefit. Nothing in this section shall be construed as an admission by us of any representation of fact, express or implied, obligation or responsibility with respect to any lot. **THE PURCHASER'S SOLE AND EXCLUSIVE**

REMEDY AGAINST BONHAMS FOR ANY REASON WHATSOEVER IS THE LIMITED RIGHT OF RESCISSION DESCRIBED IN THIS SECTION.

"Authorship" means only the identity of the creator, the period, culture and source or origin of the lot, as the case may be, as set forth in the **BOLD TYPE** heading of the print catalog entry. The right of rescission does not extend to: (a) works of art executed before 1870 (unless these works are determined to be counterfeits created since 1870), as this is a matter of current scholarly opinion which can change; (b) titles, descriptions, or other identification of offered lots, which information normally appears in lower case type below the **BOLD TYPE** heading identifying the Authorship; (c) Authorship of any lot where it was specifically mentioned that there exists a conflict of specialist or scholarly opinion regarding the Authorship of the lot at the time of sale; (d) Authorship of any lot which as of the date of sale was in accordance with the then generally-accepted opinion of scholars and specialists regarding the same; or (e) the identification of periods or dates of creation in catalog descriptions which may be proven inaccurate by means of scientific processes that are not generally accepted for use until after publication of the catalog in which the property is offered or that were unreasonably expensive or impractical to use at the time of such publication.

LIMITATION OF LIABILITY

EXCEPT AS EXPRESSLY PROVIDED ABOVE, ALL PROPERTY IS SOLD "AS IS." NEITHER BONHAMS NOR THE CONSIGNOR MAKES ANY REPRESENTATION OR WARRANTY, EXPRESS OR IMPLIED, AS TO THE MERCHANTABILITY, FITNESS OR CONDITION OF THE PROPERTY OR AS TO THE CORRECTNESS OF DESCRIPTION, GENUINENESS, ATTRIBUTION, PROVENANCE OR PERIOD OF THE PROPERTY OR AS TO WHETHER THE PURCHASER ACQUIRES ANY COPYRIGHTS OR OTHER INTELLECTUAL PROPERTY RIGHTS IN LOTS SOLD OR AS TO WHETHER A WORK OF ART IS SUBJECT TO THE ARTIST'S MORAL RIGHTS OR OTHER RESIDUAL RIGHTS OF THE ARTIST. THE PURCHASER EXPRESSLY ACKNOWLEDGES AND AGREES THAT IN NO EVENT SHALL BONHAMS BE LIABLE FOR ANY DAMAGES INCLUDING, WITHOUT LIMITATION, ANY COMPENSATORY, INCIDENTAL OR CONSEQUENTIAL DAMAGES.

SELLER'S GUIDE

SELLING AT AUCTION

Bonhams can help you every step of the way when you are ready to sell art, antiques and collectible items at auction. Our regional offices and representatives throughout the US are available to service all of your needs. Should you have any further questions, please visit our website at www.bonhams.com/us for more information or call our Client Services Department at +1 (800) 223 2854 ext. 23550.

AUCTION ESTIMATES

The first step in the auction process is to determine the auction value of your property. Bonhams' world-renowned specialists will evaluate your special items at no charge and in complete confidence. You can obtain an auction estimate in many ways:

- Attend one of our Auction Appraisal Events held regularly at our galleries and in other major metropolitan areas. The updated schedule for Bonhams Auction Appraisal Events is available at www.bonhams.com/us.
- Call our Client Services Department to schedule a private appointment at one of our galleries. If you have a large collection, our specialists can travel, by appointment, to evaluate your property on site.
- Send clear photographs to us of each individual item, including item dimensions and other pertinent information with each picture. Photos should be sent to Bonhams' address in envelopes marked

as "photo auction estimate". Alternatively, you can submit your request using our online form at www.bonhams.com/us. Digital images may be attached to the form. Please limit your images to no more than five (5) per item.

CONSIGNING YOUR PROPERTY

After you receive an estimate, you may consign your property to us for sale in the next appropriate auction. Our staff assists you throughout the process, arranging transportation of your items to our galleries (at the consignor's expense), providing a detailed inventory of your consignment, and reporting the prices realized for each lot. We provide secure storage for your property in our warehouses and all items are insured throughout the auction process. You will receive payment for your property approximately 35 days after completion of sale.

Sales commissions vary with the potential auction value of the property and the particular auction in which the property is offered. Please call us for commission rates.

PROFESSIONAL APPRAISAL SERVICES

Bonhams' specialists conduct insurance and fair market value appraisals for private collectors, corporations, museums, fiduciaries and government entities on a daily basis. Insurance appraisals, used for insurance purposes, reflect the cost of replacing property in today's retail market. Fair market value appraisals are used for estate,

tax and family division purposes and reflect prices paid by a willing buyer to a willing seller.

When we conduct a private appraisal, our specialists will prepare a thorough inventory listing of all your appraised property by category. Valuations, complete descriptions and locations of items are included in the documentation.

Appraisal fees vary according to the nature of the collection, the amount of work involved, the travel distance, and whether the property is subsequently consigned for auction.

Our appraisers are available to help you anywhere and at any time. Please call our Client Services Department to schedule an appraisal.

ESTATE SERVICES

Since 1865, Bonhams has been serving the needs of fiduciaries – lawyers, trust officers, accountants and executors – in the disposition of large and small estates. Our services are specially designed to aid in the efficient appraisal and disposition of fine art, antiques, jewelry, and collectibles. We offer a full range of estate services, ranging from flexible financial terms to tailored accounting for heirs and their agents to world-class marketing and sales support.

For more information or to obtain a detailed Trust and Estates package, please visit our website at www.bonhams.com/us or contact our Client Services Department.

BUYER'S GUIDE

BIDDING & BUYING AT AUCTION

Whether you are an experienced bidder or an enthusiastic novice, auctions provide a stimulating atmosphere unlike any other. Bonhams previews and sales are free and open to the public. As you will find in these directions, bidding and buying at auction is easy and exciting. Should you have any further questions, please visit our website at www.bonhams.com or call our Client Services Department at +1 (800) 223 2854 ext. 23550.

Catalogs

Before each auction we publish illustrated catalogs that include dates and times for previews and auctions. Our catalogs also provide descriptions and estimated values for each "lot." A lot may refer to a single item or to a group of items auctioned together. We offer our catalogs by subscription or by single copy. For information on subscribing to our catalogs, you may refer to the subscription form in this catalog, call our Client Services Department, or visit our website at www.bonhams.com/us.

Previews

Auction previews are your chance to inspect each lot prior to the auction. We encourage you to look closely and examine each object on which you may want to bid so that you will know as much as possible about it. Items are sold "as is" and with all faults; illustrations in our catalogs, website and other materials are provided for identification only. At the previews, our staff is always available to answer your questions and guide you through the auction process. Condition reports may be available upon request.

Estimates

Bonhams catalogs include estimates for each lot, exclusive of buyer's premium and tax. The estimates are provided as an approximate guide to current market value and should not be interpreted as a representation or prediction of actual selling prices. They are determined well in advance of a sale and are subject to revision. Please contact us should you have any questions about value estimates.

Reserves

All lots in a catalog are subject to a reserve unless otherwise indicated. The reserve is the minimum price that the seller is willing to accept for a lot. This amount is confidential and should not exceed the low estimated value.

BIDDING AT AUCTION

At Bonhams, you can bid in many ways: in person, via absentee bid, over the phone, or via Bonhams' online bidding facility. Absentee bids can be submitted in person, online, via fax or via email.

A valid Bonhams client account is required to participate in bidding activity. You can obtain registration information online, at the reception desk or by calling our Client Services Department.

By bidding at auction, whether in person or by agent, by absentee bid, telephone, online or other means, the buyer or bidder agrees to be bound by the Conditions of Sale.

Lots are auctioned in consecutive numerical order as they appear in the catalog. Bidding normally begins below the low estimate. The auctioneer will accept bids from interested parties present in the saleroom, from telephone bidders, and from absentee bidders who have left written bids in advance of the sale. The auctioneer may also execute bids on behalf of the consignor up to the amount of the reserve, but never above it.

We assume no responsibility for failure to execute bids for any reason whatsoever.

In Person

If you are planning to bid at auction, you will need to register at the reception desk in order to receive a numbered bid card. To place a bid, hold up your card so that the auctioneer can clearly see it. Decide on the maximum amount that you wish to pay, exclusive of buyer's premium and tax, and continue bidding until your bid prevails or you reach your limit. If you are the successful bidder on a lot, the auctioneer will acknowledge your paddle number and bid amount.

Absentee Bids

As a service to those wishing to place bids, we may at our discretion accept bids without charge in advance of sale by telephone, by facsimile or in writing on bidding forms available from us. "Buy" bids will not be accepted; all bids must state the highest bid price the bidder is willing to pay. Our auction staff

will try to bid just as you would, with the goal of obtaining the item at the lowest bid price possible. In the event identical bids are submitted, the earliest bid submitted will take precedence. Absentee bids shall be executed in competition with other absentee bids, any applicable reserve, and bids from other auction participants. A friend or agent may place bids on your behalf, provided that we have received your written authorization prior to the sale. Absentee bid forms are available in our catalogs, online at www.bonhams.com/us, and at our San Francisco, Los Angeles and New York galleries.

By Telephone

Under special circumstances, we can arrange for you to bid by telephone. To arrange for a telephone bid, please contact our Client Services Department a minimum of 24 hours prior to the sale.

Online

Web users may place absentee bids online from anywhere in the world. To bid online, please visit our website at www.bonhams.com/us.

We are pleased to make our live online bidding facility available to bidders in this sale.

Additional terms and conditions of sale relating to online bidding will apply. Please see www.bonhams.com/23411 or contact the Client Services Department to obtain information and learn how you can register and bid online in this sale.

Bid Increments

Bonhams generally uses the following increment multiples as bidding progresses:

\$50-200	by \$10s
\$200-500	by \$20/50/80s
\$500-1,000	by \$50s
\$1,000-2,000	by \$100s
\$2,000-5,000	by \$200/500/800s
\$5,000-10,000	by \$500s
\$10,000-20,000	by \$1,000s
\$20,000-50,000	by \$2,000/5,000/8,000s
\$50,000-100,000	by \$5,000s
\$100,000-200,000	by \$10,000s
above \$200,000	at auctioneer's discretion

The auctioneer may split or reject any bid at any time at his or her discretion as outlined in the Conditions of Sale.

Currency Converter

Solely for the convenience of bidders, a currency converter may be provided at Bonhams sales. The rates quoted for conversion of other currencies to U.S. Dollars are indications only and should not be relied upon by a bidder, and neither Bonhams nor its agents shall be responsible for any errors or omissions in the operation or accuracy of the currency converter.

Buyer's Premium

A buyer's premium is added to the winning bid price of each individual lot purchased, at the rates set forth in the Conditions of Sale. The winning bid price plus the premium constitute the purchase price for the lot. Applicable sales taxes are computed based on this figure, and the total becomes your final purchase price.

Unless specifically illustrated and noted, fine art frames are not included in the estimate or purchase price. Bonhams accepts no liability for damage or loss to frames during storage or shipment.

All sales are final and subject to the Conditions of Sale found in our catalogs, on our website, and available at the reception desk.

Payment

All buyers are asked to pay and pick up by 3pm on the business day following the auction. Payment may be made to Bonhams by cash, checks drawn on a U.S. bank, money order, wire transfer, or by Visa, MasterCard, American Express or Discover credit or charge card or debit card. All items must be paid for within 5 business days of the sale. Please note that payment by personal or business check may result in property not being released until purchase funds clear our bank.

Sales Tax

California, Arizona, Colorado, Connecticut, Florida, Georgia, Illinois, Nevada, New York, Massachusetts, Pennsylvania, Texas, Washington DC and Washington state residents must pay applicable sales tax. Other state or local taxes (or compensating use taxes) may apply. Sales tax will be

automatically added to the invoice unless a valid resale number has been furnished or the property is shipped via common carrier to destinations outside the states listed above. If you wish to use your resale license please contact Cashiers for our form.

Shipping & Removal

Buyers are to review the Offsite Sold Property Storage page for a list of lots that will be removed to the offsite warehouse of Box Brothers. These designated lots must be retrieved by the buyer prior to the day and time designated on the Offsite Sold Property Storage page. If buyers of these designated lots also buy other lots, such as decorations, rugs or works of art, these lots may also be removed to the warehouse of Box Brothers, so all lots remain together and customers can collect or ship from one location. All other items will remain at Bonhams for a period of 21 days, after which time they may be transferred to offsite storage. [Wine, Jewelry, Natural History, Collectibles, 20th Century Decorative Arts, Rugs, Native American Art, Tribal Art and most Arms & Armor auctions are not included in this policy.](#)

Box Brothers San Leandro (for San Francisco auctions only)
1471 Doolittle Drive, San Leandro, CA 94577
Tel (800) 942 6822; Fax (510) 628 8454

Box Brothers Los Angeles (for Los Angeles auctions only)
220 W. Ivy Ave, Unit C, Inglewood, Ca 90302
+1 (310) 419 9915 or +1 (800) 474 7447

Box Brothers is open Monday-Friday 8am-5pm with Saturday and Sunday hours available. Buyers must contact Box Brothers 24 hours in advance of pickup. Appointments are required.

Bonhams can accommodate shipping for certain items. Please contact our Cashiers Department for more information or to obtain a quote. Refer to Conditions of Sale for special terms governing the shipment of Arms and Wine. Shipments are made during weekday business hours up to four weeks after payment is received. Carriers are not permitted to deliver to P.O. Boxes.

International buyers are responsible for all import/export customs duties and taxes. An invoice stating the actual purchase price(s) will accompany all international purchases.

Simultaneous sale property collection notice:

If this sale previews in multiple cities, please see the title page for details regarding final location of property for collection.

Handling and Storage Charges

Please note: For sold lots removed to Box Brothers, there will be no post-sale storage charge for lots collected within 5 days from the sale date. For lots that remain at Bonhams, there will be no post-sale storage charge for lots collected within 21 days of the sale date. Handling fees may apply.

Lots uncollected at Bonhams after 21 days may be removed to the warehouse of Box Brothers. Handling and storage fees will apply.

Insurance: All sold lots are insured by Box Brothers at the sum of the hammer price plus buyer's premium.

Please refer to Box Brothers for a list of Handling, Storage and Insurance fees.

Payment

Payments for purchased lots must be made directly to Bonhams. Box Brothers will not release property to a buyer unless the buyer has paid Bonhams first. All charges for handling and storage due to Box Brothers must be paid by the time of collection from their warehouse. Please telephone Box Brothers at +1 (800) 474 7447 in advance to ascertain the amount due. **Lots will only be released from Box Brothers' warehouse with a "Release Order" obtained from the cashier's office at Bonhams.**

The removal/storage and/or shipment by Box Brothers of any lots will be subject to their standard Conditions of Business, copies of which are available at Bonhams or from Box Brothers directly.

Auction Results

To find out the final purchase price for any lot following the sale, please call our automated auction results line at +1 (800) 223 2854 ext. 3400. Auction results are usually available on the next business day following the sale or online at www.bonhams.com/us.

Catalog Order Form

Bonhams

Please check the Auction Catalog(s) you would like to receive, complete the address and payment information below and send the completed form via email to catalogs.us@bonhams.com, or via fax at (415) 861 8951, or mail to:

Bonhams
220 San Bruno Avenue
San Francisco, California 94103

If you have any questions please contact us at +1 (800) 223 2854

Category Name	Internal	Domestic Address*	International Address*	Issues per year**
19th CENTURY PAINTINGS (Including Russian and Dogs in Art)	PIC41	<input type="checkbox"/> \$200	<input type="checkbox"/> \$280	5
20TH CENTURY FURNITURE & DECORATIVE ARTS	FRN21	<input type="checkbox"/> \$160	<input type="checkbox"/> \$200	4
AFRICAN, OCEANIC & PRE-COLUMBIAN ART	TRI12	<input type="checkbox"/> \$120	<input type="checkbox"/> \$150	3
AMERICAN & CALIFORNIA WESTERN PAINTINGS & SCULPTURE	PIC40	<input type="checkbox"/> \$200	<input type="checkbox"/> \$250	5
ARMS, ARMOR AND MODERN SPORTING GUNS	ARM10	<input type="checkbox"/> \$80	<input type="checkbox"/> \$100	2
ASIAN WORKS OF ART	ASN10	<input type="checkbox"/> \$360	<input type="checkbox"/> \$430	9
BONHAMS QUARTERLY MAGAZINE	MAGB	<input type="checkbox"/> \$30		4
BOOKS, MANUSCRIPTS & RELATED CATEGORIES	BKS10	<input type="checkbox"/> \$320	<input type="checkbox"/> \$400	8
COINS AND BANKNOTES	CNS10	<input type="checkbox"/> \$160	<input type="checkbox"/> \$200	4
CONTEMPORARY ART (Including Made in California)	PIC50 & PIC52	<input type="checkbox"/> \$200	<input type="checkbox"/> \$250	5
ENTERTAINMENT MEMORABILIA & COLLECTABLES	COL10	<input type="checkbox"/> \$160	<input type="checkbox"/> \$200	4
EUROPEAN & AMERICAN FURNITURE & DECORATIVE ARTS	FRN20	<input type="checkbox"/> \$320	<input type="checkbox"/> \$400	7
IMPRESSIONIST AND MODERN ART	PIC55	<input type="checkbox"/> \$100	<input type="checkbox"/> \$120	2
INDIAN, HIMALAYAN & SOUTHEAST ASIAN ART	ASN12	<input type="checkbox"/> \$80	<input type="checkbox"/> \$100	2
JAPANESE WORKS OF ART	ASN11	<input type="checkbox"/> \$120	<input type="checkbox"/> \$140	3
JEWELRY	JWL10	<input type="checkbox"/> \$320	<input type="checkbox"/> \$400	8
MADE IN CALIFORNIA CONTEMPORARY ART	PIC52	<input type="checkbox"/> \$80	<input type="checkbox"/> \$100	2
MARITIME PAINTINGS AND DECORATIVE ARTS	COL11	<input type="checkbox"/> \$80	<input type="checkbox"/> \$100	2
MOTOR CARS, MOTORCYCLES & AUTOMOBILIA	MOT10 & MOT20	<input type="checkbox"/> \$330	<input type="checkbox"/> \$390	6
MOTORCYCLES	MOT20	<input type="checkbox"/> \$40	<input type="checkbox"/> \$50	1
NATIVE AMERICAN ART	NTV10	<input type="checkbox"/> \$120	<input type="checkbox"/> \$150	3
NATURAL HISTORY, GEMS, MINERALS & LAPIDARY	NAT10	<input type="checkbox"/> \$120	<input type="checkbox"/> \$150	3
ORIENTAL RUGS AND CARPETS	CPT10	<input type="checkbox"/> \$160	<input type="checkbox"/> \$200	3
PHOTOGRAPHS	PIC44	<input type="checkbox"/> \$120	<input type="checkbox"/> \$150	3
PRINTS	PIC43	<input type="checkbox"/> \$120	<input type="checkbox"/> \$150	3
SPACE MEMORABILIA	BKS11	<input type="checkbox"/> \$40	<input type="checkbox"/> \$50	1
WATCHES	JWL11	<input type="checkbox"/> \$120	<input type="checkbox"/> \$150	3
WINES & WHISKY	WIN10	<input type="checkbox"/> \$280	<input type="checkbox"/> \$350	5
WRITING INSTRUMENTS	COL20	<input type="checkbox"/> \$50	<input type="checkbox"/> \$70	2
ALL CATEGORIES	ALLCAT	<input type="checkbox"/> \$4,500	<input type="checkbox"/> \$5,600	112

**The number of auction catalogs and sales listed for a subscription are strictly estimates. We are not responsible for refunds or credits if the number of sales alters from the estimate. Some of the above categories may include our auctions in other locations.

Method of Payment

Check/Money Order enclosed for \$: _____
Payable to Bonhams & Butterfields

Visa Mastercard American Express

Card Number _____ 16-digit Number

Expiration Date ____ / ____ CVV ____

Cardholder Name _____

Address _____

City _____ State __ Zip _____ Country _____

Signature _____ Date _____

Send Catalogs to:

Name _____

Address _____

City _____ State __ Zip _____ Country _____

Telephone _____ Fax _____

E-mail _____

Client Number (internal use only) _____

CONTACTS

OFFICERS

Laura King Pfaff
Chairman

Matthew Girling
Chief Executive Officer

Leslie Wright
Vice President, Trusts and Estates

Jon King
Vice President, Business Development

Vice Presidents, Specialists

Susan F. Abeles

Rupert Banner

Gary Espinosa

Judith Eurich

Alan Fausel

Mark Fisher

Martin Gammon

Dessa Goddard

Jim Haas

Scott Levitt

Mark Osborne

Hadji Rahimpour

Brooke Sivo

Catherine Williamson

REPRESENTATIVES

Arizona

Terri Adrian-Hardy, (480) 994 5362

California - Central Valley

David Daniel, (916) 364 1645

California - Palm Springs

Brooke Sivo, (760) 350 4255

Colorado - Denver

Julie Segraves, (720) 355 3737 †

District of Columbia/Mid-Atlantic

Martin Gammon, (202) 333 1696

Florida

Jon King

(561) 651 7876, Palm Beach

(305) 228 6600, Miami

(954) 566 1630, Ft. Lauderdale

Georgia

Mary Moore Bethea, (404) 842 1500

Illinois

Ricki Harris

(773) 267 3300, (773) 680 2881

Massachusetts/Boston/New England

Amy Corcoran, (617) 742 0909

Nevada

David Daniel, (775) 831 0330

New Mexico

Michael Bartlett, (505) 820 0701

Oregon and Idaho

Sheryl Acheson, (503) 312 6023

Texas

Amy Lawch, (202) 333 1696

Virginia

Gertraud Hechl, (713) 621 5988

Washington

Heather O'Mahony, (206) 218 5011

Canada

Toronto, Ontario

Jack Kerr-Wilson, (416) 462 9004

Montreal, Quebec

David Kelsey, (514) 894 1138 †

BONHAMS *

NEW YORK DEPARTMENTS
580 Madison Avenue
New York, New York 10022
(212) 644 9001

Books & Manuscripts

Christina Geiger, (212) 644 9094

Cassandra Hatton, (212) 461 6531

Brian Kalkbrenner, (917) 206 1625

Chinese Works of Art & Paintings

Bruce MacLaren, (917) 206 1677

Collectors' Motorcars & Motorcycles

Rupert Banner, (212) 461 6515

Eric Minoff, (917) 206 1630

Evan Ide

Fine Art

American

Alan Fausel, (212) 644 9039

Kayla Carlsen, (917) 206 1699

Contemporary

Jeremy Goldsmith, (917) 206 1656

European Paintings

Madalina Lazen, (212) 644 9108

Impressionist & Modern

William O'Reilly, (212) 644 9135

History of Science

Cassandra Hatton, (212) 461-6531

Himalayan Art

Mark Rasmussen, (917) 206 1688

Edward Wilkinson, (917) 206 1688

Japanese Works of Art

Jeff Olson, (212) 461 6516

Jewelry

Susan F. Abeles, (212) 461 6525

Caroline Morrissey, (212) 644 9046

Maritime Paintings & Works of Art

Gregg Dietrich, (212) 644 9001 †

Photographs & Prints

Shawna Brickley, (917) 206 1690

Russian Fine & Decorative Arts

Yelena Harbick, (212) 644 9136

Space History

Cassandra Hatton, (212) 461 6531

Trusts & Estates

Sheri Cohen, (917) 206 1671

Watches & Clocks

Jonathan Snellenburg, (212) 461 6530

Wine & Whisky

Gary D'Urso, (917) 206 1653

CLIENT SERVICES DEPARTMENT

San Francisco

(415) 861 7500

(415) 861 8951 fax

Los Angeles

(323) 850 7500

(323) 850 6090 fax

Monday - Friday, 8.30am to 5pm

BONHAMS *

SAN FRANCISCO DEPARTMENTS
220 San Bruno Avenue
San Francisco California 94103
(800) 223 2854

20th Century Fine Art

Sarah Nelson, ext. 23311

Arms & Armor

Paul Carella, ext. 23360

James Ferrell, ext. 23332

Asian Works of Art

Dessa Goddard, ext. 23333

Books & Manuscripts

Adam Stackhouse, ext. 23266

Decorative Arts

Jennifer Kurtz, ext. 65478

Furniture & Decorative Arts, European

Andrew Jones, ext. 65432

Jewelry & Watches

Shannon Beck, ext. 23306

Collectors' Motorcars & Motorcycles

Mark Osborne, ext. 23353

Jakob Greisen, ext. 23284

Museum Services

Laura King Pfaff, ext. 23210

Native American Art

Jim Haas, ext. 23294

California & Western Paintings & Sculpture

Aaron Bastian, ext. 23241

Photographs Prints

Judith Eurich, ext. 23259

Oriental Rugs & Carpets

Hadji Rahimpour, ext. 23392

Space History

Adam Stackhouse, ext. 23266

Trusts & Estates

Victoria Richardson, ext. 23207

Wine

Doug Davidson, ext. 23363

Writing Instruments

Ivan Briggs, ext. 23255

BONHAMS *

LOS ANGELES DEPARTMENTS
7601 W. Sunset Boulevard
Los Angeles California 90046
(800) 223 2854

20th Century Decorative Arts

Angela Past, ext. 65422

Daniel Tolson, ext. 65405

20th Century Fine Art

Alexis Chompaisal, ext. 65469

African, Oceanic & Pre-Columbian Art

Fredric W. Backlar, ext. 65416 †

Books & Manuscripts

Catherine Williamson, ext. 65442

Coins & Banknotes

Paul Song, ext. 65455

Entertainment Memorabilia

Lucy Carr, ext. 65467

Dana Hawkes, (978) 283 1518

Furniture & Decorative Arts

Andrew Jones, ext. 65432

Furniture & Decorative Arts, American

Brooke Sivo, ext. 65420

Jewelry & Watches

Dana Ehrman, ext. 65407

Claire De Biasio-Paris, ext. 65483

Collectors' Motorcars & Motorcycles

Nick Smith, ext. 65470

Contemporary Art

Dane Jensen, ext. 65451

Photographs

Prints

Morisa Rosenberg, ext. 65435

Natural History

Thomas E. Lindgren, ext. 65437 †

Claudia Florian, G.J.G., ext. 65437 †

California & Western Paintings & Sculpture

Scot Levitt, ext. 65425

Paintings - European

Mark Fisher, ext. 65488

Silver

Aileen Ward, ext 65463

Trusts & Estates

Leslie Wright, ext. 65408

Joseph Francaviglia, ext. 65443

* Indicates saleroom

† Indicates independent contractor

The following information is recorded and available 24 hours a day, 7 days a week, through our telephone system:

- Auction and Preview Information
- Directions to Bonhams's salesrooms
- Automated Auction Results

Auction Registration Form

(Attendee / Absentee / Online / Telephone Bidding)
Please circle your bidding method above.

--	--	--	--

Paddle number (for office use only)

General Notice: This sale will be conducted in accordance with Bonhams Conditions of Sale, and your bidding and buying at the sale will be governed by such terms and conditions. Please read the Conditions of Sale in conjunction with the Buyer's Guide relating to this sale and other published notices and terms relating to bidding. Payment by personal or business check may result in your property not being released until purchase funds clear our bank. Checks must be drawn on a U.S. bank.

Notice to Absentee Bidders: In the table below, please provide details of the lots on which you wish to place bids at least 24 hours prior to the sale. Bids will be rounded down to the nearest increment. Please refer to the Buyer's Guide in the catalog for further information relating to instructions to Bonhams to execute absentee bids on your behalf. Bonhams will endeavor to execute bids on your behalf but will not be liable for any errors or non-executed bids.

Notice to First Time Bidders: New clients are requested to provide photographic proof of ID - passport, driving license, ID card, together with proof of address - utility bill, bank or credit card statement etc. Corporate clients should also provide a copy of their articles of association / company registration documents, together with a letter authorizing the individual to bid on the company's behalf. Failure to provide this may result in your bids not being processed. For higher value lots you may also be asked to provide a bankers reference.

Notice to online bidders; If you have forgotten your username and password for www.bonhams.com, please contact Client Services.

If successful

- I will collect the purchases myself
- Please contact me with a shipping quote (if applicable)
- I will arrange a third party to collect my purchase(s)

Please mail or fax the completed Registration Form and requested information to:

Bonhams Client Services Department
7601 Sunset Blvd
Los Angeles, California 90046
Tel +1 (800) 223 2854
Fax +1 (323) 850 6090
Automated results
Tel +1 (415) 503 3410

Bonhams

Sale title:		Sale date:	
Sale no.		Sale venue:	
General Bid Increments:			
\$10 - 200by 10s		\$10,000 - 20,000by 1,000s	
\$200 - 500by 20 / 50 / 80s		\$20,000 - 50,000by 2,000 / 5,000 / 8,000s	
\$500 - 1,000by 50s		\$50,000 - 100,000by 5,000s	
\$1,000 - 2,000by 100s		\$100,000 - 200,000by 10,000s	
\$2,000 - 5,000by 200 / 500 / 800s		above \$200,000at the auctioneer's discretion	
\$5,000 - 10,000by 500s		The auctioneer has discretion to split any bid at any time.	
Customer Number		Title	
First Name		Last Name	
Company name (to be invoiced if applicable)			
Address			
City		County / State	
Post / Zip code		Country	
Telephone mobile		Telephone daytime	
Telephone evening		Fax	
Telephone bidders: indicate primary and secondary contact numbers by writing ① or ② next to the telephone number.			
E-mail (in capitals) _____			
By providing your email address above, you authorize Bonhams to send you marketing materials and news concerning Bonhams and partner organizations. Bonhams does not sell or trade email addresses.			
I am registering to bid as a private client <input type="checkbox"/>		I am registering to bid as a trade client <input type="checkbox"/>	
Resale: please enter your resale license number here _____ We may contact you for additional information.			

SHIPPING	
Shipping Address (if different than above):	
Address: _____	Country: _____
City: _____	Post/ZIP code: _____

Please note that all telephone calls are recorded.

Type of bid (A-Absentee, T-Telephone)	Lot no.	Brief description (In the event of any discrepancy, lot number and not lot description will govern.) If you are bidding online there is no need to complete this section.	MAX bid in US\$ (excluding premium and applicable tax) Emergency bid for telephone bidders only*

You instruct us to execute each absentee bid up to the corresponding bid amount indicated above.

* Emergency Bid: A maximum bid (exclusive of Buyer's Premium and tax) to be executed by Bonhams only if we are unable to contact you by telephone or should the connection be lost during bidding.

BY SIGNING THIS FORM YOU AGREE THAT YOU HAVE READ AND UNDERSTAND OUR CONDITIONS OF SALE AND SHALL BE LEGALLY BOUND BY THEM, AND YOU AGREE TO PAY THE BUYER'S PREMIUM, ANY APPLICABLE TAXES, AND ANY OTHER CHARGES MENTIONED IN THE BUYER'S GUIDE OR CONDITIONS OF SALE. THIS AFFECTS YOUR LEGAL RIGHTS.	
Your signature: _____	Date: _____



B 1793

Bonhams

7601 W. Sunset Boulevard
Los Angeles, California 90046

+1 323 850 7500

+1 323 850 6090 (fax)

